

Recombinant

Myosin (Smooth Muscle) (BP6091) Rabbit mAb

db30079

Package : 100μL

Product Name : Myosin (Smooth Muscle) (BP6091) Rabbit mAb**Cat.No.:** db30079**Synonyms** : AAT4; FAA4; SMHC; SMMHC**Application** : IHC, WB**Reactivity** : Human**Host species** : Rabbit**Background**

Smooth Muscle Myosin, heavy chain (SMM-HC) is a cytoplasmic structural protein that is a major component of the contractile apparatus of the smooth muscle cells. Expression of smooth muscle myosin is developmentally regulated, appearing early and is specific for smooth muscle development.

Immunogen

Synthetic peptide corresponding to Myosin (Smooth Muscle) residues within aa1-100 of Myosin (Smooth Muscle) was used as an immunogen

Swiss Prot

P35749

Synonyms

AAT4; FAA4; SMHC; SMMHC

Reactivity

Human

Application

IHC, WB

Recommended dilution

IHC: 1:100-1:200

Calculated MW

227 kDa

Host species

Rabbit

Clonality

Monoclonal

Clonality No.

BP6091

Isotype

IgG

Purity

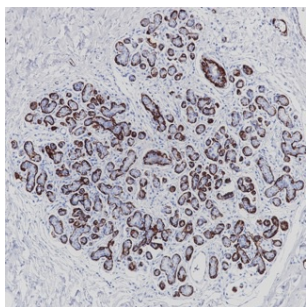
Affinity Purification

Conjugation

Un-conjugated

Storage Stability

Store at -20°C. Supplied in 50mM Tris-Glycine(pH 7.4), 0.15M NaCl, 40% Glycerol, 0.01% sodium azide and 0.05% BSA. Stable for 12 months from date of receipt.



Immunohistochemistry of paraffin-embedded human breast using Myosin (Smooth Muscle) antibody at dilution of 1:200 (200x lens).