

## Recombinant

## CD2 (BP6107) Rabbit mAb

db30090

Package : 100μL

**Product Name :** CD2 (BP6107) Rabbit mAb**Cat.No.:** db30090**Synonyms :** T11; SRBC; LFA-2**Application :** IHC**Reactivity :** Human**Host species :** Rabbit**Background**

CD2 is mainly present on the surface of mature T cells and NK cell membranes, while B cells are usually not expressed. It can be used to label the diagnosis and study of normal T cells and their associated tumors, such as pre-t cell lymphoma, marginal T cell lymphoma and anaplastic cell lymphoma.

**Immunogen**

Synthetic peptide corresponding to residues within N-Term of CD2 was used as an immunogen

**Swiss Prot**

P06729

**Synonyms**

T11; SRBC; LFA-2

**Reactivity**

Human

**Application**

IHC

**Recommended dilution**

IHC: 1:100-1:200

**Calculated MW**

39 kDa

**Host species**

Rabbit

**Clonality**

Monoclonal

**Clonality No.**

BP6107

**Isotype**

IgG

**Purity**

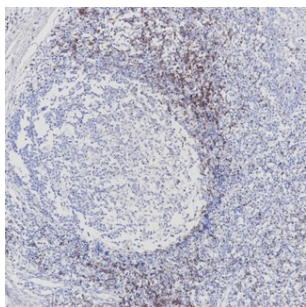
Affinity Purification

**Conjugation**

Un-conjugated

**Storage Stability**

Store at -20°C. Supplied in 50mM Tris-Glycine(pH 7.4), 0.15M NaCl, 40% Glycerol, 0.01% sodium azide and 0.05% BSA. Stable for 12 months from date of receipt.



Immunohistochemistry of paraffin-embedded human tonsil using CD2 antibody at dilution of 1:200 (200x lens).