

## Recombinant

## Cytokeratin 17 (BP6108) Rabbit mAb

db30091

Package : 100µL

**Product Name :** Cytokeratin 17 (BP6108) Rabbit mAb**Cat.No.:** db30091**Synonyms :** PC; K17; PC2; 39.1; CK-17; PCHC1**Application :** IHC**Reactivity :** Human**Host species :** Rabbit**Background**

Cytokeratin 17 (CK17) is 48 kD intermediate filament found in simple epithelia and is a marker for cervical reserve (stem) cells. CK17 can be useful in the identification of uterine cervical squamous lesions including atypical immature metaplasia, cervical intraepithelial neoplasia, and cervical squamous carcinoma. CK17 also assists in the differentiation of oral squamous cell carcinoma. CK17 staining occurs in human epithelial appendages such as hair follicles.

**Immunogen**

Synthetic peptide corresponding to residues within aa400-500 of Human Cytokeratin 17 was used as an immunogen

**Swiss Prot**

Q04695

**Synonyms**

PC; K17; PC2; 39.1; CK-17; PCHC1

**Reactivity**

Human

**Application**

IHC

**Recommended dilution**

IHC: 1:100-1:200

**Calculated MW**

48 kDa

**Host species**

Rabbit

**Clonality**

Monoclonal

**Clonality No.**

BP6108

**Isotype**

IgG

**Purity**

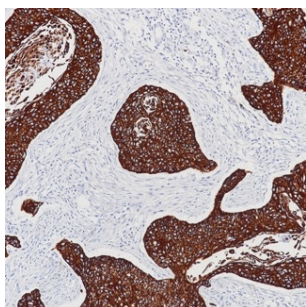
Affinity Purification

**Conjugation**

Un-conjugated

**Storage Stability**

Store at -20°C. Supplied in 50mM Tris-Glycine(pH 7.4), 0.15M NaCl, 40% Glycerol, 0.01% sodium azide and 0.05% BSA. Stable for 12 months from date of receipt.



Immunohistochemistry of paraffin-embedded human lung squamous carcinoma using Cytokeratin 17 antibody at dilution of 1:200 (200x lens).