

Recombinant

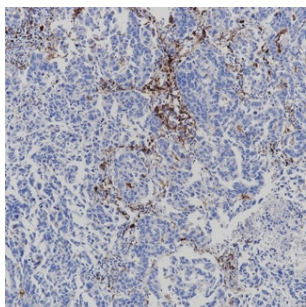
CD14 (BP6111) Rabbit mAb

db30093

Package : 100μL

Product Name : CD14 (BP6111) Rabbit mAb**Cat.No.:** db30093**Synonyms** : Myeloid cell-specific leucine-rich glycoprotein**Application** : IHC**Reactivity** : Human**Host species** : Rabbit

Background	CD14 is receptor for endotoxin and apoptotic cells. It is expressed by monocytes/histiocytes, Langerhans' cells, follicular dendritic reticulum cells, neutrophils (weakly), and endothelial cells of the liver sinusoids.
Immunogen	Synthetic peptide corresponding to residues within aa1-100 of CD14 was used as an immunogen
Swiss Prot	P08571
Synonyms	Myeloid cell-specific leucine-rich glycoprotein
Reactivity	Human
Application	IHC
Recommended dilution	IHC: 1:100-1:200
Calculated MW	40 kDa
Host species	Rabbit
Clonality	Monoclonal
Clonality No.	BP6111
Isotype	IgG
Purity	Affinity Purification
Conjugation	Un-conjugated
Storage Stability	Store at -20°C. Supplied in 50mM Tris-Glycine(pH 7.4), 0.15M NaCl, 40% Glycerol, 0.01% sodium azide and 0.05% BSA. Stable for 12 months from date of receipt.



Immunohistochemistry of paraffin-embedded human adenocarcinoma of lung using CD14 antibody at dilution of 1:200 (200x lens).