

Recombinant

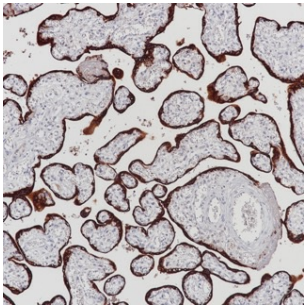
Human Placental Lactogen (BP6114) Rabbit mAb

db30096

Package : 100μL

Product Name : Human Placental Lactogen (BP6114) Rabbit mAb**Cat.No.:** db30096**Application** : IHC**Reactivity** : Human**Host species** : Rabbit

Background	Human placental lactogen (also called CSH1 or HPL), is a member of the human growth hormone (hGH)/human placental lactogen gene family. It is important in the regulation of maternal and fetal metabolism, as well as the growth and development of the fetus.
Immunogen	Synthetic peptide corresponding to residues within aa100-200 of Human Placental Lactogen was used as an immunogen
Swiss Prot	P0DML2
Reactivity	Human
Application	IHC
Recommended dilution	IHC: 1:100-1:200
Calculated MW	25 kDa
Host species	Rabbit
Clonality	Monoclonal
Clonality No.	BP6114
Isotype	IgG
Purity	Affinity Purification
Conjugation	Un-conjugated
Storage Stability	Store at -20°C. Supplied in 50mM Tris-Glycine(pH 7.4), 0.15M NaCl, 40% Glycerol, 0.01% sodium azide and 0.05% BSA. Stable for 12 months from date of receipt.



Immunohistochemistry of paraffin-embedded human placenta using Human Placental Lactogen antibody at dilution of 1:200 (200x lens).