

Recombinant

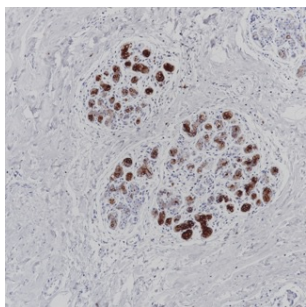
Mammaglobin (BP6125) Rabbit mAb

db30106

Package : 100μL

Product Name : Mammaglobin (BP6125) Rabbit mAb**Cat.No.:** db30106**Synonyms :** MGB1; UGB2**Application :** IHC**Reactivity :** Human**Host species :** Rabbit

Background	Mammaglobin, 10 kDa, is a cytoplasmic protein, a mammary-specific member of the uteroglobin family. It is related to a family of epithelial secretory proteins that includes prostatein and Clara cell protein.
Immunogen	Recombinant fragment corresponding to Human Mammaglobin was used as an immunogen
Swiss Prot	Q13296
Synonyms	MGB1; UGB2
Reactivity	Human
Application	IHC
Recommended dilution	IHC: 1:100-1:200
Calculated MW	10.5 kDa
Host species	Rabbit
Clonality	Monoclonal
Clonality No.	BP6125
Isotype	IgG
Purity	Affinity Purification
Conjugation	Un-conjugated
Storage Stability	Store at -20°C. Supplied in 50mM Tris-Glycine(pH 7.4), 0.15M NaCl, 40% Glycerol, 0.01% sodium azide and 0.05% BSA. Stable for 12 months from date of receipt.



Immunohistochemistry of paraffin-embedded human breast using Mammaglobin antibody at dilution of 1:200 (200x lens).