

Recombinant

Lambda Light Chains (BP6133) Rabbit mAb

db30112

Package : 100µL

Product Name : Lambda Light Chains (BP6133) Rabbit mAb**Cat.No.:** db30112**Application** : IHC**Reactivity** : Human**Host species** : Rabbit**Background**

Lambda light chains are polypeptide chains located in the cell membrane and cytoplasmic regions of normal B cells and plasma cells. The combination of lambda light chains and heavy chains forms immunoglobulin molecules.

Immunogen

Synthetic peptide corresponding to residues within N^oterminus of Immunoglobulin lambda constant 1 was used as an immunogen

Swiss Prot

P0CG04

Reactivity

Human

Application

IHC

Recommended dilution

IHC: 1:100-1:200

Calculated MW

23 kDa

Host species

Rabbit

Clonality

Monoclonal

Clonality No.

BP6133

Isotype

IgG

Purity

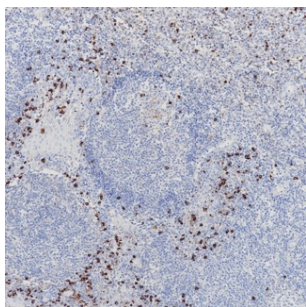
Affinity Purification

Conjugation

Un-conjugated

Storage Stability

Store at -20°C. Supplied in 50mM Tris-Glycine(pH 7.4), 0.15M NaCl, 40% Glycerol, 0.01% sodium azide and 0.05% BSA. Stable for 12 months from date of receipt.



Immunohistochemistry of paraffin-embedded human tonsil using Lambda Light Chains antibody at dilution of 1:200 (200x lens).