

Recombinant

NSE (BPM6150) Mouse mAb

db30129

Package : 100μL

Product Name : NSE (BPM6150) Mouse mAb**Cat.No.:** db30129**Synonyms** : NSE; HEL-S-279**Application** : IHC**Reactivity** : Human**Host species** : Mouse**Background**

NSE is an intracytoplasmic protein, and enolase is a dimer in mammals. It has three subunits: 1, 2, and 3, which are mainly distributed in central nerve, peripheral nerve, neuroendocrine cells and tumor cells. This antibody can specifically recognize 47kDa of NSE, and can be used for the auxiliary diagnosis of neuroendocrine tumors. D

Immunogen

Synthetic peptide within Human NSE aa 416-433

Swiss Prot

P09104

Synonyms

NSE; HEL-S-279

Reactivity

Human

Application

IHC

Recommended dilution

IHC: 1:100-1:200

Calculated MW

47 kDa

Host species

Mouse

Clonality

Monoclonal

Clonality No.

BPM6150

Isotype

IgG

Purity

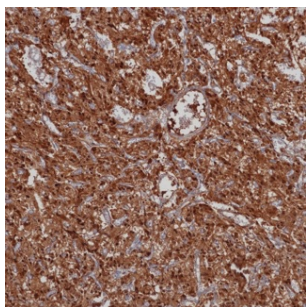
Affinity Purification

Conjugation

Un-conjugated

Storage Stability

Store at -20°C. Supplied in 50mM Tris-Glycine(pH 7.4), 0.15M NaCl, 40% Glycerol, 0.01% sodium azide and 0.05% BSA. Stable for 12 months from date of receipt.



Immunohistochemistry of paraffin-embedded human pheochromocytoma using NSE antibody at dilution of 1:200 (200x lens).