

## Recombinant

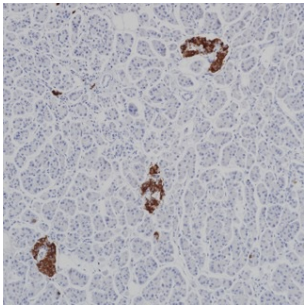
## Insulin (2D11-H5) Mouse mAb

db30132

Package : 100μL

**Product Name** : Insulin (2D11-H5) Mouse mAb**Cat.No.:** db30132**Synonyms** : IDDM; ILPR; IRDN; IDDM1; IDDM2; MODY10**Application** : IHC**Reactivity** : Human**Host species** : Mouse

<b>Background</b>	Insulin is a hormone that regulates glucose homeostasis. It increases cell permeability to monosaccharides, amino acids and fatty acids, and it accelerates glycolysis, the pentose phosphate cycle, and glycogen synthesis in liver. It is synthesized in the beta cell of the pancreas.
<b>Swiss Prot</b>	P01308
<b>Synonyms</b>	IDDM; ILPR; IRDN; IDDM1; IDDM2; MODY10
<b>Reactivity</b>	Human
<b>Application</b>	IHC
<b>Recommended dilution</b>	IHC: 1:100-1:200
<b>Calculated MW</b>	11 kDa
<b>Host species</b>	Mouse
<b>Clonality</b>	Monoclonal
<b>Clonality No.</b>	2D11-H5
<b>Isotype</b>	IgG
<b>Purity</b>	Affinity Purification
<b>Conjugation</b>	Un-conjugated
<b>Storage Stability</b>	Store at -20°C. Supplied in 50mM Tris-Glycine(pH 7.4), 0.15M NaCl, 40% Glycerol, 0.01% sodium azide and 0.05% BSA. Stable for 12 months from date of receipt.



Immunohistochemistry of paraffin-embedded human pancreas using Insulin antibody at dilution of 1:200 (200x lens).