

Recombinant

IgG (BP6161) Rabbit mAb

db30141

Package : 100μL

Product Name : IgG (BP6161) Rabbit mAb**Cat.No.:** db30141**Synonyms :** FCRN; alpha-chain**Application :** IHC**Reactivity :** Human**Host species :** Rabbit**Background**

Immunoglobulin G (IgG) is an antibody isotype secreted by plasma cells and composed of four peptide chains – two identical heavy chains and two identical light chains arranged in a Y-shape typical of antibody monomers. In humans, IgG consists of four subclasses that differ only marginally in their amino acid composition. Representing approximately 75% of serum immunoglobulins in humans, IgG is the most abundant antibody isotype found in the circulation.

Immunogen

Full length native protein (purified) corresponding to Human Human IgG

Swiss Prot

P55899

Synonyms

FCRN; alpha-chain

Reactivity

Human

Application

IHC

Recommended dilution

IHC: 1:100-1:200

Calculated MW

36 kDa

Host species

Rabbit

Clonality

Monoclonal

Clonality No.

BP6161

Isotype

IgG

Purity

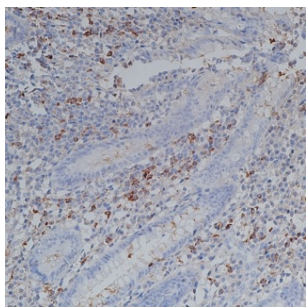
Affinity Purification

Conjugation

Un-conjugated

Storage Stability

Store at -20°C. Supplied in 50mM Tris-Glycine(pH 7.4), 0.15M NaCl, 40% Glycerol, 0.01% sodium azide and 0.05% BSA. Stable for 12 months from date of receipt.



Immunohistochemistry of paraffin-embedded human appendix using IgG antibody at dilution of 1:200 (200x lens).