

Recombinant

MHC II (DR α chain) (BP6170) Rabbit mAb

db30150

Package : 100 μ L**Product Name** : MHC II (DR α chain) (BP6170) Rabbit mAb**Cat.No.:** db30150**Synonyms** : HLA-DRA1**Application** : IHC, WB**Reactivity** : Human**Host species** : Rabbit**Background**

Major histocompatibility complex class II (MHC class II) molecules are heterodimeric, transmembrane glycoproteins expressed on the surface of antigen-presenting cells such as macrophages, dendritic cells, and B cells. Expression can also be induced on other cell types through interferon- γ signaling. Prior to being displayed on the cell membrane, MHC class II molecules are loaded with exogenous peptide antigens approximately 15-24 amino acids in length that were derived from endocytosed extracellular proteins digested in the lysosome.

Immunogen

Synthetic peptide near N-terminal residues in Human MHC II (DR α chain) was used as an immunogen

Swiss Prot

P01903

Synonyms

HLA-DRA1

Reactivity

Human

Application

IHC, WB

Recommended dilution

IHC: 1:100-1:200

Calculated MW

29 kDa

Host species

Rabbit

Clonality

Monoclonal

Clonality No.

BP6170

Isotype

IgG

Purity

Affinity Purification

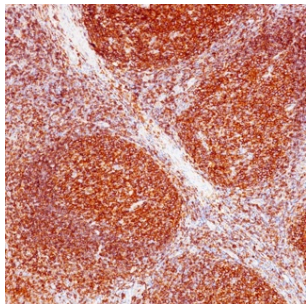
Conjugation

Un-conjugated

Storage Stability

Store at -20°C. Supplied in 50mM Tris-Glycine(pH 7.4), 0.15M NaCl, 40% Glycerol, 0.01% sodium

azide and 0.05% BSA. Stable for 12 months from date of receipt.



Immunohistochemistry of paraffin-embedded human tonsil using MHC II (DR α chain) antibody at dilution of 1:200 (200x lens).