

Recombinant

COL4A5 (BP6206) Rabbit mAb

db30170

Package : 100µL

Product Name : COL4A5 (BP6206) Rabbit mAb**Cat.No.:** db30170**Application :** IHC, WB**Reactivity :** Human**Host species :** Rabbit**Background**

Type IV collagen is the major structural component of glomerular basement membranes (GBM), forming a 'chicken-wire' meshwork together with laminins, proteoglycans and entactin/nidogen. Deletions covering the N-terminal regions of COL4A5 and COL4A6, which are localized in a head-to-head manner, are found in the chromosome Xq22.3 centromeric deletion syndrome. This results in a phenotype with features of diffuse leiomyomatosis and Alport syndrome (DL-ATS).

Immunogen

Recombinant fragment with COL4A5. This information is proprietary to Biolynx and/or its suppliers

Swiss Prot

P29400

Reactivity

Human

Application

IHC, WB

Recommended dilution

IHC: 1:100-1:200

Calculated MW

161 kDa

Host species

Rabbit

Clonality

Monoclonal

Clonality No.

BP6206

Isotype

IgG

Purity

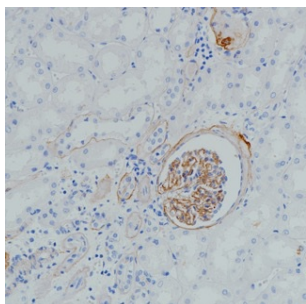
Affinity Purification

Conjugation

Un-conjugated

Storage Stability

Store at -20°C. Supplied in 50mM Tris-Glycine(pH 7.4), 0.15M NaCl, 40% Glycerol, 0.01% sodium azide and 0.05% BSA. Stable for 12 months from date of receipt.



Immunohistochemistry of paraffin-embedded human kidney using COL4A5 antibody at dilution of 1:200 (200x lens).