

Recombinant

NUT1 (BP6221) Rabbit mAb

db30181

Package : 100μL

Product Name : NUT1 (BP6221) Rabbit mAb**Cat.No.:** db30181**Application** : IHC, WB**Reactivity** : Human**Host species** : Rabbit**Background**

Nuclear protein in testis (NUT1 or NUTM1) is a nuclear protein encoded by the NUTM1 gene on chromosome 15 and normally expressed in testicular tissues. NUT1 is an unstructured protein with few orthologs, and shuttles between the nucleus and cytoplasm. NUT cancer (formerly NUT Midline Carcinoma) occurs after a gene fusion event between NUTM1 and often a bromodomain (BRD) family gene in about 75% of cases. NUTM1 less commonly fuses with NSD3, MXD4, MGA, ZNF532, CIC, and other rare variants, which are all considered to be NUT cancers.

Immunogen

Synthetic peptide corresponding to residues of NUT1 was used as an immunogen

Swiss Prot

Q86Y26

Reactivity

Human

Application

IHC, WB

Recommended dilution

IHC: 1:100-1:200

Calculated MW

120 kDa

Host species

Rabbit

Clonality

Monoclonal

Clonality No.

BP6221

Isotype

IgG

Purity

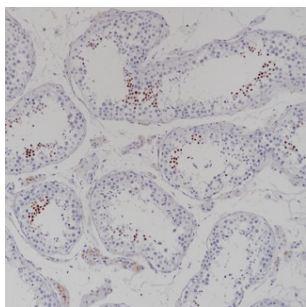
Affinity Purification

Conjugation

Un-conjugated

Storage Stability

Store at -20°C. Supplied in 50mM Tris-Glycine(pH 7.4), 0.15M NaCl, 40% Glycerol, 0.01% sodium azide and 0.05% BSA. Stable for 12 months from date of receipt.



Immunohistochemistry of paraffin-embedded human testis using NUT1 antibody at dilution of 1:200 (200x lens).