

## Recombinant

## MHC I (BP6234) Rabbit mAb

db30191

Package : 100μL

**Product Name :** MHC I (BP6234) Rabbit mAb**Cat.No.:** db30191**Application :** IHC, WB**Reactivity :** Human**Host species :** Rabbit**Background**

Major Histocompatibility Complex (MHC) is a genetic region on chromosomes composed of tightly linked highly polymorphic gene loci that encode cell surface specific proteins, depending on the structure and function of genes and coding products. We divide MHC into class I, class II and class III gene regions. Endogenous antigen presentation is presented by the major histocompatibility complex I (MHC I) pathway. Intracytoplasmic proteins are decomposed into peptides during protease degradation, which in turn are delivered by HSP41 and HSP90 proteins to TAP on the membrane.

**Immunogen**

Recombinant protein fragment of HLA-A was used as an immunogen

**Swiss Prot**

P04439, P01889, P10321

**Reactivity**

Human

**Application**

IHC, WB

**Recommended dilution**

IHC: 1:100-1:200

**Calculated MW**

40/41 kDa

**Host species**

Rabbit

**Clonality**

Monoclonal

**Clonality No.**

BP6234

**Isotype**

IgG

**Purity**

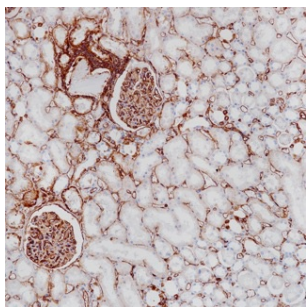
Affinity Purification

**Conjugation**

Un-conjugated

**Storage Stability**

Store at -20°C. Supplied in 50mM Tris-Glycine(pH 7.4), 0.15M NaCl, 40% Glycerol, 0.01% sodium azide and 0.05% BSA. Stable for 12 months from date of receipt.



Immunohistochemistry of paraffin-embedded human kidney using MHC I antibody at dilution of 1:200 (200x lens).