

Recombinant

CXCR5 (BP6239) Rabbit mAb

db30196

Package : 100µL

Product Name : CXCR5 (BP6239) Rabbit mAb**Cat.No.:** db30196**Synonyms :** BLR1; CD185; MDR15**Application :** IHC, WB**Reactivity :** Human**Host species :** Rabbit**Background**

CXCR5 is expressed in mature B-cells and Burkitt's lymphoma. CXCR5 is highly expressed in primary and secondary follicles within gastric lymphomas. Higher CXCR5 expression and migration by non-small cell lung cancer (NSCLC) cells suggest a role in migration and metastasis of primary lung tumors in response to CXCL13. It has been proposed that CXCR5/CXCL13, either alone or in combination, could be used as a prognostic biomarker for lung cancer. Other studies have shown that CXCR5 overexpression in breast cancer patients highly correlates with lymph node metastases, and elevated CXCR5 antibody expression may contribute to abnormal cell survival and migration in breast tumors that lack functional p53 protein. Another study has indicated that prostate cancer tissue as well as cell lines express higher non-basal levels of CXCR5 and found a correlation between the level of CXCR5 and Gleason score.

Immunogen

CXCR5 is expressed in mature B-cells and Burkitt's lymphoma. CXCR5 is highly expressed in primary and secondary follicles within gastric lymphomas. Higher CXCR5 expression and migration by non-small cell lung cancer (NSCLC) cells suggest a role in migration and metastasis of primary lung tumors in response to CXCL13. It has been proposed that CXCR5/CXCL13, either alone or in combination, could be used as a prognostic biomarker for lung cancer. Other studies have shown that CXCR5 overexpression in breast cancer patients highly correlates with lymph node metastases, and elevated CXCR5 antibody expression may contribute to abnormal cell survival and migration in breast tumors that lack functional p53 protein. Another study has indicated that prostate cancer tissue as well as cell lines express higher non-basal levels of CXCR5 and found a correlation between the level of CXCR5 and Gleason score. C

Swiss Prot

P32302

Synonyms

BLR1; CD185; MDR15

Reactivity

Human

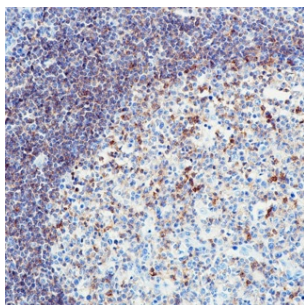
Application

IHC, WB

Recommended dilution

IHC: 1:100-1:200

Calculated MW	42 kDa
Host species	Rabbit
Clonality	Monoclonal
Clonality No.	BP6239
Isotype	IgG
Purity	Affinity Purification
Conjugation	Un-conjugated
Storage Stability	Store at -20°C. Supplied in 50mM Tris-Glycine(pH 7.4), 0.15M NaCl, 40% Glycerol, 0.01% sodium azide and 0.05% BSA. Stable for 12 months from date of receipt.



Immunohistochemistry of paraffin-embedded human tonsil using CXCR5 antibody at dilution of 1:200 (200x lens).