

Recombinant

DGRmAb®

Cyclin A2 (DGR11202) Rabbit mAb

db11895

Package : 10µL 20µL 50µL 100µL

Product Name : Cyclin A2 (DGR11202) Rabbit mAb**Cat.No.:** db11895**Synonyms :** CCN1; CCNA**Application :** WB, IHC-P, ICC/IF, IP**Reactivity :** Human**Host species :** Rabbit

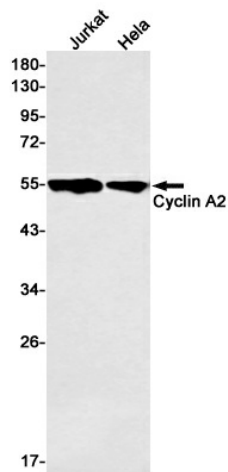
Background	The protein encoded by this gene belongs to the highly conserved cyclin family, whose members function as regulators of the cell cycle. This protein binds and activates cyclin-dependent kinase 2 and thus promotes transition through G1/S and G2/M. [provided by RefSeq, Aug 2016]
Immunogen	Recombinant protein of human Cyclin A2
Gene ID	890
Swiss Prot	P20248
Synonyms	CCN1; CCNA
Reactivity	Human
Application	WB, IHC-P, ICC/IF, IP
Recommended dilution	WB: 1:1000 IHC-P: 1:200-1:2000 ICC/IF: 1:100-1:200 IP: 1:20-1:50
Calculated MW	49 kDa
Observed MW	49 kDa
Host species	Rabbit
Clonality	Monoclonal
Clonality No.	DGR11202
Isotype	IgG
Purity	Affinity Purification

Conjugation

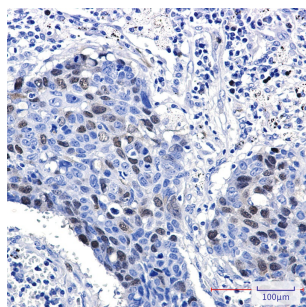
Un-conjugated

Storage Stability

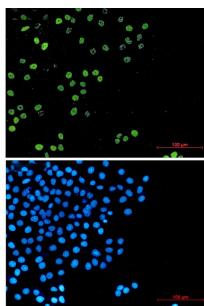
Store at -20°C. Supplied in 50mM Tris-Glycine(pH 7.4), 0.15M NaCl, 40% Glycerol, 0.01% sodium azide and 0.05% BSA. Stable for 12 months from date of receipt.



Western blot detection of Cyclin A2 in Jurkat, HeLa cell lysates using Cyclin A2 antibody(1:500 diluted).



Immunohistochemical analysis of paraffin-embedded human lung cancer using db11895 antibody.



Immunofluorescent analysis of HeLa cells using db11895 antibody (green), and DAPI (blue).