

Recombinant

DGRmAb®

MCM6 (DGR11259) Rabbit mAb

db11016

Package : 10µL 20µL 50µL 100µL

Product Name : MCM6 (DGR11259) Rabbit mAb**Cat.No.:** db11016**Synonyms :** Mis5; P105MCM; MCG40308**Application :** WB, IHC-P, ICC/IF, FC, IP**Reactivity :** Human,Mouse,Rat**Host species :** Rabbit**Background**

The protein encoded by this gene is one of the highly conserved mini-chromosome maintenance proteins (MCM) that are essential for the initiation of eukaryotic genome replication. The hexameric protein complex formed by the MCM proteins is a key component of the pre-replication complex (pre_RC) and may be involved in the formation of replication forks and in the recruitment of other DNA replication related proteins. The MCM complex consisting of this protein and MCM2, 4 and 7 proteins possesses DNA helicase activity, and may act as a DNA unwinding enzyme. The phosphorylation of the complex by CDC2 kinase reduces the helicase activity, suggesting a role in the regulation of DNA replication. Single nucleotide polymorphisms in the intron regions of this gene are associated with differential transcriptional activation of the promoter of the neighboring lactase gene and, thereby, influence lactose intolerance in early adulthood. [provided by RefSeq, May 2012]

Immunogen

Recombinant protein of human MCM6

Gene ID

4175

Swiss Prot

Q14566

Synonyms

Mis5; P105MCM; MCG40308

Reactivity

Human,Mouse,Rat

Application

WB, IHC-P, ICC/IF, FC, IP

Recommended dilution

WB: 1:1000

IHC-P: 1:500-1:2000

ICC/IF: 1:200-1:500

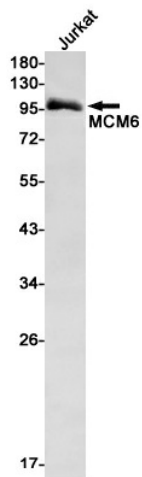
FC: 1:100

IP: 1:20-1:50

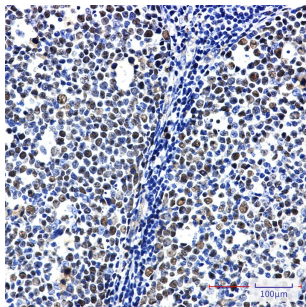
Calculated MW

93 kDa

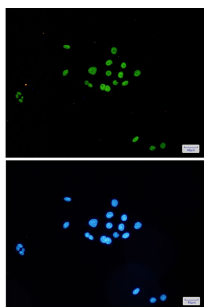
Observed MW	93 kDa
Host species	Rabbit
Clonality	Monoclonal
Clonality No.	DGR11259
Isotype	IgG
Purity	Affinity Purification
Conjugation	Un-conjugated
Storage Stability	Store at -20°C. Supplied in 50mM Tris-Glycine(pH 7.4), 0.15M NaCl, 40% Glycerol, 0.01% sodium azide and 0.05% BSA. Stable for 12 months from date of receipt.



Western blot detection of MCM6 in Jurkat cell lysates using MCM6 antibody(1:1000 diluted).



Immunohistochemical analysis of paraffin-embedded human tonsil using db11016 antibody.



Immunofluorescent analysis of HeLa cells using db11016 antibody (green), and DAPI (blue).

