

Recombinant

DGRmAb®

NSE (DGR11262) Rabbit mAb

db13423

Package : 10µL 20µL 50µL 100µL

Product Name : NSE (DGR11262) Rabbit mAb**Cat.No.:** db13423**Synonyms** : NSE; HEL-S-279**Application** : WB, ICC/IF, FC, IP**Reactivity** : Human,Mouse,Rat**Host species** : Rabbit**Background**

This gene encodes one of the three enolase isoenzymes found in mammals. This isoenzyme, a homodimer, is found in mature neurons and cells of neuronal origin. A switch from alpha enolase to gamma enolase occurs in neural tissue during development in rats and primates. [provided by RefSeq, Jul 2008]

Immunogen

Recombinant protein of human NSE

Gene ID

2026

Swiss Prot

P09104

Synonyms

NSE; HEL-S-279

Reactivity

Human,Mouse,Rat

Application

WB, ICC/IF, FC, IP

Recommended dilution

WB: 1:1000-1:5000

ICC/IF: 1:100

FC: 1:20

IP: 1:50

Calculated MW

47 kDa

Observed MW

47 kDa

Host species

Rabbit

Clonality

Monoclonal

Clonality No.

DGR11262

Isotype

IgG

Purity

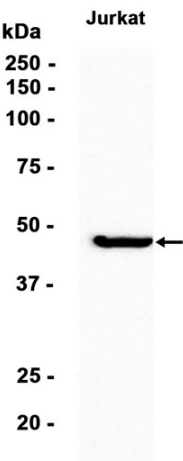
Affinity Purification

Conjugation

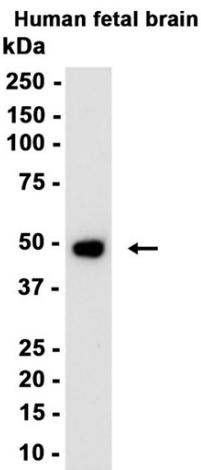
Un-conjugated

Storage Stability

Store at -20°C. Supplied in 50mM Tris-Glycine(pH 7.4), 0.15M NaCl, 40% Glycerol, 0.01% sodium azide and 0.05% BSA. Stable for 12 months from date of receipt.



Western blot analysis of extracts from Jurkat cells using db13423 at 1:3000.



Western blot analysis of extracts from Human fetal brain tissue using db13423 at 1:1000.