

Recombinant

DGRmAb®

Doublecortin (DGR11323) Rabbit mAb

db11118

Package : 10µL 20µL 50µL 100µL

Product Name : Doublecortin (DGR11323) Rabbit mAb**Cat.No.:** db11118**Synonyms :** DC; DBCN; LISX; SCLH; XLIS**Application :** WB, IHC-P, ICC/IF**Reactivity :** Human,Mouse,Rat**Host species :** Rabbit**Background**

This gene encodes a member of the doublecortin family. The protein encoded by this gene is a cytoplasmic protein and contains two doublecortin domains, which bind microtubules. In the developing cortex, cortical neurons must migrate over long distances to reach the site of their final differentiation. The encoded protein appears to direct neuronal migration by regulating the organization and stability of microtubules. In addition, the encoded protein interacts with LIS1, the regulatory gamma subunit of platelet activating factor acetylhydrolase, and this interaction is important to proper microtubule function in the developing cortex. Mutations in this gene cause abnormal migration of neurons during development and disrupt the layering of the cortex, leading to epilepsy, cognitive disability, subcortical band heterotopia ("double cortex" syndrome) in females and lissencephaly ("smooth brain" syndrome) in males. Multiple transcript variants encoding different isoforms have been found for this gene. [provided by RefSeq, Sep 2010]

Immunogen

Recombinant protein of human Doublecortin

Gene ID

1641

Swiss Prot

O43602

Synonyms

DC; DBCN; LISX; SCLH; XLIS

Reactivity

Human,Mouse,Rat

Application

WB, IHC-P, ICC/IF

Recommended dilutionWB: 1:1000
IHC-P: 1:100-1:200
ICC/IF: 1:100-1:200**Calculated MW**

41 kDa

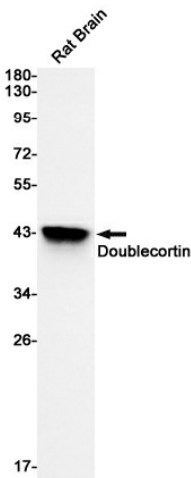
Observed MW

41 kDa

Host species

Rabbit

Clonality	Monoclonal
Clonality No.	DGR11323
Isotype	IgG
Purity	Affinity Purification
Conjugation	Un-conjugated
Storage Stability	Store at -20°C. Supplied in 50mM Tris-Glycine(pH 7.4), 0.15M NaCl, 40% Glycerol, 0.01% sodium azide and 0.05% BSA. Stable for 12 months from date of receipt.



Western blot detection of Doublecortin in Rat Brain cell using Doublecortin antibody(1:1000 diluted).