

Recombinant

DGRmAb®

RAB8A (DGR11431) Rabbit mAb

db14334

Package : 10µL 20µL 50µL 100µL

Product Name : RAB8A (DGR11431) Rabbit mAb**Cat.No.:** db14334**Synonyms** : MEL; RAB8**Application** : WB, IHC-P, ICC/IF, FC**Reactivity** : Human,Mouse,Rat**Host species** : Rabbit**Background**

The protein encoded by this gene is a member of the RAS superfamily which are small GTP/GDP-binding proteins with an average size of 200 amino acids. The RAS-related proteins of the RAB/YPT family may play a role in the transport of proteins from the endoplasmic reticulum to the Golgi and the plasma membrane. This protein shares 97%, 96%, and 51% similarity with the dog RAB8, mouse MEL, and mouse YPT1 proteins, respectively and contains the 4 GTP/GDP-binding sites that are present in all the RAS proteins. The putative effector-binding site of this protein is similar to that of the RAB/YPT proteins. However, this protein contains a C-terminal CAAX motif that is characteristic of many RAS superfamily members but which is not found in YPT1 and the majority of RAB proteins. Although this gene was isolated as a transforming gene from a melanoma cell line, no linkage between MEL and malignant melanoma has been demonstrable. This oncogene is located 800 kb distal to MY09B on chromosome 19p13.1. [provided by RefSeq, Jul 2008]

Immunogen

A synthetic peptide of human RAB8A

Gene ID

4218

Swiss Prot

P61006

Synonyms

MEL; RAB8

Reactivity

Human,Mouse,Rat

Application

WB, IHC-P, ICC/IF, FC

Recommended dilution

WB: 1:1000-1:5000

IHC-P: 1:200-1:500

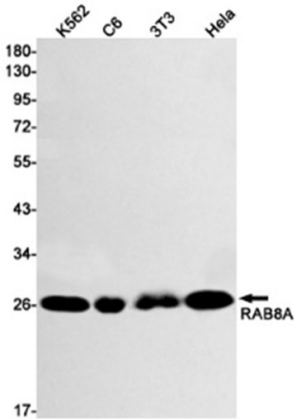
ICC/IF: 1:200-1:500

FC: 1:200

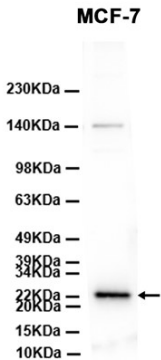
Calculated MW

24 kDa

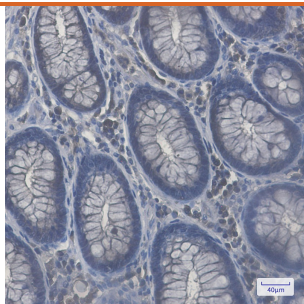
Observed MW	24 kDa
Host species	Rabbit
Clonality	Monoclonal
Clonality No.	DGR11431
Isotype	IgG
Purity	Affinity Purification
Conjugation	Un-conjugated
Storage Stability	Store at -20°C. Supplied in 50mM Tris-Glycine(pH 7.4), 0.15M NaCl, 40% Glycerol, 0.01% sodium azide and 0.05% BSA. Stable for 12 months from date of receipt.



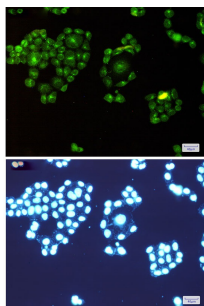
Western blot detection of RAB8A in K562,C6,3T3,Hela cell lysates using RAB8A antibody(1:1000 diluted).



Western blot analysis of extracts from MCF-7 cells using db14334 at 1:3000.



Immunohistochemical analysis of paraffin-embedded human colon cancer using db14334 antibody.



Immunofluorescent analysis of HeLa cells using db14334 antibody (green), and DAPI (blue).