

Recombinant

DGRmAb®

Presenilin 2 (DGR11491) Rabbit mAb

db11569

Package : 10µL 20µL 50µL 100µL

Product Name : Presenilin 2 (DGR11491) Rabbit mAb

Cat.No.: db11569

Synonyms : AD4; PS2; AD3L; STM2; CMD1V

Application : WB, IHC-P, ICC/IF, FC, IP

Reactivity : Human,Mouse,Rat

Host species : Rabbit

Background

Alzheimer's disease (AD) patients with an inherited form of the disease carry mutations in the presenilin proteins (PSEN1 or PSEN2) or the amyloid precursor protein (APP). These disease-linked mutations result in increased production of the longer form of amyloid-beta (main component of amyloid deposits found in AD brains). Presenilins are postulated to regulate APP processing through their effects on gamma-secretase, an enzyme that cleaves APP. Also, it is thought that the presenilins are involved in the cleavage of the Notch receptor such that, they either directly regulate gamma-secretase activity, or themselves act as protease enzymes. Two alternatively spliced transcript variants encoding different isoforms of PSEN2 have been identified. [provided by RefSeq, Jul 2008]

Immunogen

A synthetic peptide of human Presenilin 2

Gene ID

5664

Swiss Prot

P49810

Synonyms

AD4; PS2; AD3L; STM2; CMD1V

Reactivity

Human,Mouse,Rat

Application

WB, IHC-P, ICC/IF, FC, IP

Recommended dilution

WB: 1:2000-1:20000

IHC-P: 1:200-1:500

ICC/IF: 1:50-1:200

FC: 1:20-1:50

IP: 1:20

Calculated MW

50 kDa

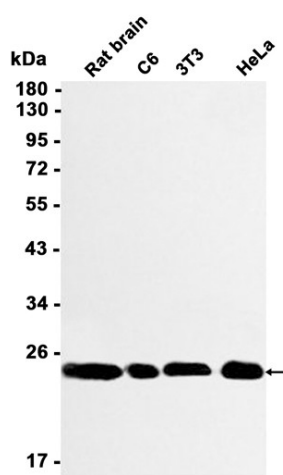
Observed MW

23 kDa

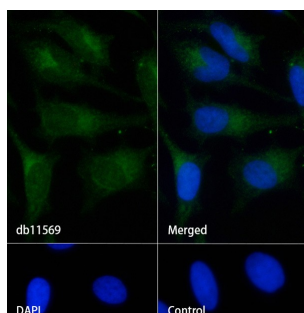
Host species

Rabbit

Clonality	Monoclonal
Clonality No.	DGR11491
Isotype	IgG
Purity	Affinity Purification
Conjugation	Un-conjugated
Storage Stability	Store at -20°C. Supplied in 50mM Tris-Glycine(pH 7.4), 0.15M NaCl, 40% Glycerol, 0.01% sodium azide and 0.05% BSA. Stable for 12 months from date of receipt.



Western blot analysis of extracts from C6, 3T3, HeLa cells and Rat brain tissue using db11569 at 1:1000.



Immunofluorescence analysis of HeLa cells labelling Presenilin 2 with db11569.

The cells were fixed with cold 100% methanol (10min, 4°C) and blocked in 1% BSA/10% normal goat serum/0.3M glycine in 0.1% PBS-Tween 20 for 1h. The cells were then incubate with db11569 (1:50) at room temprature for 1h, followed by a further incubation at room temperature for 45min with Goat Anti Rabbit IgG (H+L)-AF488 (db10005, shown in green). Nuclear DNA was labeled in blue with DAPI.

Control: Secondary antibody only.