

Recombinant

DGRmAb®

ENO1 (DGR11537) Rabbit mAb

db12339

Package : 10µL 20µL 50µL 100µL

Product Name : ENO1 (DGR11537) Rabbit mAb**Cat.No.:** db12339**Synonyms** : NNE; PPH; MPB1; ENO1L1; HEL-S-17**Application** : WB, ICC/IF, FC, IP**Reactivity** : Human, Mouse, Rat**Host species** : Rabbit**Background**

This gene encodes alpha-enolase, one of three enolase isoenzymes found in mammals. Each isoenzyme is a homodimer composed of 2 alpha, 2 gamma, or 2 beta subunits, and functions as a glycolytic enzyme. Alpha-enolase in addition, functions as a structural lens protein (tau-crystallin) in the monomeric form. Alternative splicing of this gene results in a shorter isoform that has been shown to bind to the c-myc promoter and function as a tumor suppressor. Several pseudogenes have been identified, including one on the long arm of chromosome 1. Alpha-enolase has also been identified as an autoantigen in Hashimoto encephalopathy. [provided by RefSeq, Jan 2011]

Immunogen

A synthetic peptide of human ENO1

Gene ID

2023

Swiss Prot

P06733

Synonyms

NNE; PPH; MPB1; ENO1L1; HEL-S-17

Reactivity

Human, Mouse, Rat

Application

WB, ICC/IF, FC, IP

Recommended dilution

WB: 1:2000

ICC/IF: 1:50

FC: 1:20

IP: 1:20

Calculated MW

47 kDa

Observed MW

47 kDa

Host species

Rabbit

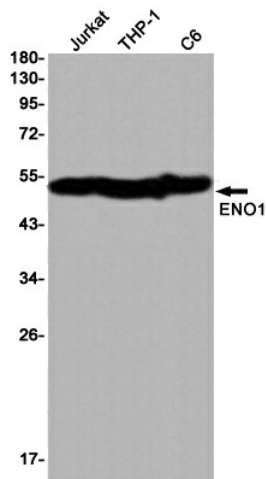
Clonality

Monoclonal

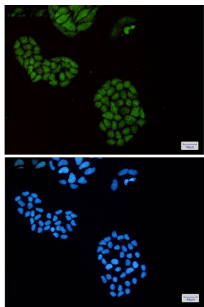
Clonality No.

DGR11537

Isotype	IgG
Purity	Affinity Purification
Conjugation	Un-conjugated
Storage Stability	Store at -20°C. Supplied in 50mM Tris-Glycine(pH 7.4), 0.15M NaCl, 40% Glycerol, 0.01% sodium azide and 0.05% BSA. Stable for 12 months from date of receipt.



Western blot detection of ENO1 in Jurkat,THP-1,C6 cell lysates using ENO1 antibody(1:1000 diluted).



Immunofluorescent analysis of HeLa cells using db12339 antibody (green), and DAPI (blue).