

Recombinant

DGRmAb®

Estrogen Receptor alpha (DGR11560) Rabbit mAb

db12490

Package : 10µL 20µL 50µL 100µL

Product Name : Estrogen Receptor alpha (DGR11560) Rabbit mAb**Cat.No.:** db12490**Synonyms** : ER; ESR; Era; ESRA; ESTRR; NR3A1**Application** : WB, IHC-P, ICC/IF, FC**Reactivity** : Human,Mouse,Rat**Host species** : Rabbit**Background**

This gene encodes an estrogen receptor, a ligand-activated transcription factor composed of several domains important for hormone binding, DNA binding, and activation of transcription. The protein localizes to the nucleus where it may form a homodimer or a heterodimer with estrogen receptor 2. Estrogen and its receptors are essential for sexual development and reproductive function, but also play a role in other tissues such as bone. Estrogen receptors are also involved in pathological processes including breast cancer, endometrial cancer, and osteoporosis. Alternative promoter usage and alternative splicing result in dozens of transcript variants, but the full-length nature of many of these variants has not been determined. [provided by RefSeq, Mar 2014]

Immunogen

A synthetic peptide of human Estrogen Receptor alpha

Gene ID

2099

Swiss Prot

P03372

Synonyms

ER; ESR; Era; ESRA; ESTRR; NR3A1

Reactivity

Human,Mouse,Rat

Application

WB, IHC-P, ICC/IF, FC

Recommended dilutionWB: 1:1000
IHC-P: 1:200-1:20000
ICC/IF: 1:100-1:200
FC: 1:200-1:1000**Calculated MW**

66 kDa

Observed MW

66 kDa

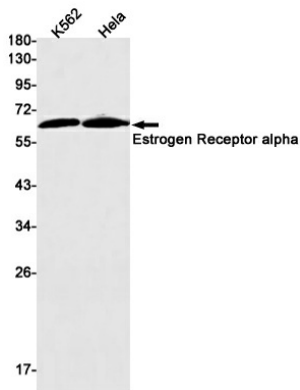
Host species

Rabbit

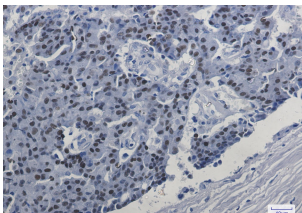
Clonality

Monoclonal

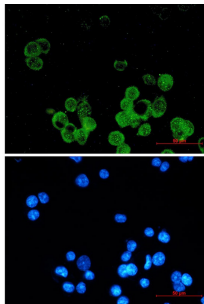
Clonality No.	DGR11560
Isotype	IgG
Purity	Affinity Purification
Conjugation	Un-conjugated
Storage Stability	Store at -20°C. Supplied in 50mM Tris-Glycine(pH 7.4), 0.15M NaCl, 40% Glycerol, 0.01% sodium azide and 0.05% BSA. Stable for 12 months from date of receipt.



Western blot detection of Estrogen Receptor alpha in K562,HeLa cell lysates using Estrogen Receptor alpha antibody(1:1000 diluted).



Immunohistochemical analysis of paraffin-embedded human breast cancer using db12490 antibody.



Immunofluorescent analysis of MCF-7 cells using db12490 antibody (green), and DAPI (blue).