

Recombinant

DGRmAb®

**P2Y6 (DGR11756) Rabbit mAb**

db12145

Package : 10µL 20µL 50µL 100µL

**Product Name** : P2Y6 (DGR11756) Rabbit mAb**Cat.No.:** db12145**Synonyms** : P2Y6**Application** : WB, IHC-P, ICC/IF, IP**Reactivity** : Human**Host species** : Rabbit**Background**

The product of this gene belongs to the family of P2 receptors, which is activated by extracellular nucleotides and subdivided into P2X ligand-gated ion channels and P2Y G-protein coupled receptors. This family has several receptor subtypes with different pharmacological selectivity, which overlaps in some cases, for various adenosine and uridine nucleotides. This receptor, which is a G-protein coupled receptor, is responsive to UDP, partially responsive to UTP and ADP, and not responsive to ATP. It is proposed that this receptor mediates inflammatory responses. Alternative splicing results in multiple transcript variants that encode different protein isoforms. [provided by RefSeq, Mar 2013]

**Immunogen**

A synthetic peptide of human P2Y6

**Gene ID**

5031

**Swiss Prot**

Q15077

**Synonyms**

P2Y6

**Reactivity**

Human

**Application**

WB, IHC-P, ICC/IF, IP

**Recommended dilution**

WB: 1:5000-1:50000

IHC-P: 1:100-1:200

ICC/IF: 1:100-1:200

IP: 1:50

**Calculated MW**

36 kDa

**Observed MW**

36 kDa

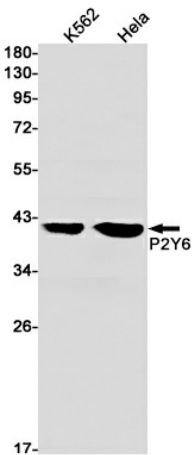
**Host species**

Rabbit

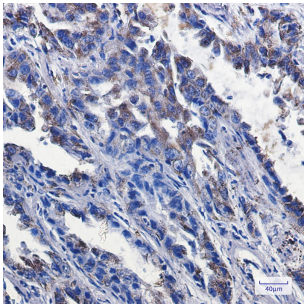
**Clonality**

Monoclonal

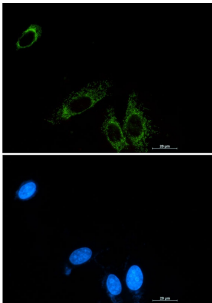
Clonality No.	DGR11756
Isotype	IgG
Purity	Affinity Purification
Conjugation	Un-conjugated
Storage Stability	Store at -20°C. Supplied in 50mM Tris-Glycine(pH 7.4), 0.15M NaCl, 40% Glycerol, 0.01% sodium azide and 0.05% BSA. Stable for 12 months from date of receipt.



Western blot detection of P2Y6 in K562,HeLa cell lysates using P2Y6 antibody(1:1000 diluted).



Immunohistochemical analysis of paraffin-embedded human lung cancer tissue using db12145 antibody.



Immunofluorescent analysis of A549 cells using db12145 antibody (green), and DAPI (blue).