

Recombinant

DGRmAb®

**ABCE1 (DGR11795) Rabbit mAb**

db12374

Package : 10µL 20µL 50µL 100µL

**Product Name** : ABCE1 (DGR11795) Rabbit mAb**Cat.No.:** db12374**Synonyms** : RLI; OABP; RLI1; ABC38; RNS4I; RNASEL1; RNASELI**Application** : WB, IHC-P, ICC/IF, FC, IP**Reactivity** : Human,Mouse,Rat**Host species** : Rabbit**Background**

The protein encoded by this gene is a member of the superfamily of ATP-binding cassette (ABC) transporters. ABC proteins transport various molecules across extra- and intra-cellular membranes. ABC genes are divided into seven distinct subfamilies (ABC1, MDR/TAP, MRP, ALD, OABP, GCN20, White). This protein is a member of the OABP subfamily. Alternatively referred to as the RNase L inhibitor, this protein functions to block the activity of ribonuclease L. Activation of ribonuclease L leads to inhibition of protein synthesis in the 2-5A/RNase L system, the central pathway for viral interferon action. Two transcript variants encoding the same protein have been found for this gene. [provided by RefSeq, Jul 2008]

**Immunogen**

A synthetic peptide of human ABCE1

**Gene ID**

6059

**Swiss Prot**

P61221

**Synonyms**

RLI; OABP; RLI1; ABC38; RNS4I; RNASEL1; RNASELI

**Reactivity**

Human,Mouse,Rat

**Application**

WB, IHC-P, ICC/IF, FC, IP

**Recommended dilution**

WB: 1:1000-1:5000

IHC-P: 1:100

ICC/IF: 1:100-1:200

FC: 1:100-1:200

IP: 1:20-1:50

**Calculated MW**

67 kDa

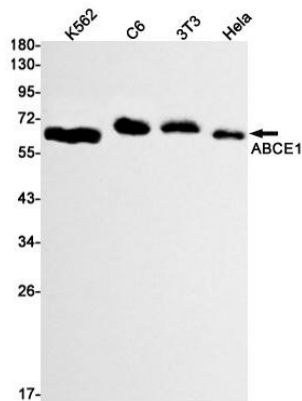
**Observed MW**

67 kDa

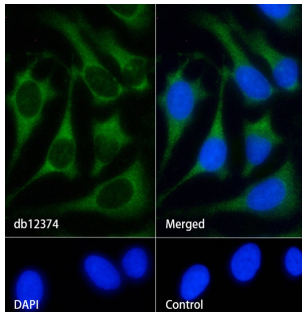
**Host species**

Rabbit

Clonality	Monoclonal
Clonality No.	DGR11795
Isotype	IgG
Purity	Affinity Purification
Conjugation	Un-conjugated
Storage Stability	Store at -20°C. Supplied in 50mM Tris-Glycine(pH 7.4), 0.15M NaCl, 40% Glycerol, 0.01% sodium azide and 0.05% BSA. Stable for 12 months from date of receipt.



Western blot detection of ABCE1 in K562,C6,3T3,HeLa cell lysates using ABCE1 antibody(1:1000 diluted).



Immunofluorescence analysis of HeLa cells labelling ABCE1 with db12374.

The cells were fixed with cold 100% methanol (10min, 4°C) and blocked in 1% BSA/10% normal goat serum/0.3M glycine in 0.1% PBS-Tween 20 for 1h. The cells were then incubate with db12374 (1:100) at room temprature for 1h, followed by a further incubation at room temperature for 45min with Goat Anti Rabbit IgG (H+L)-AF488 (db10005, shown in green). Nuclear DNA was labeled in blue with DAPI.

Control: Secondary antibody only.