

Recombinant

DGRmAb®

**CD13 (DGR11805) Rabbit mAb**

db11477

Package : 10µL 20µL 50µL 100µL

**Product Name :** CD13 (DGR11805) Rabbit mAb**Cat.No.:** db11477**Synonyms :** APN; CD13; LAP1; P150; PEPN; GP150**Application :** WB, IHC-P, ICC/IF, IP**Reactivity :** Human,Rat**Host species :** Rabbit**Background**

Aminopeptidase N is located in the small-intestinal and renal microvillar membrane, and also in other plasma membranes. In the small intestine aminopeptidase N plays a role in the final digestion of peptides generated from hydrolysis of proteins by gastric and pancreatic proteases. Its function in proximal tubular epithelial cells and other cell types is less clear. The large extracellular carboxyterminal domain contains a pentapeptide consensus sequence characteristic of members of the zinc-binding metalloproteinase superfamily. Sequence comparisons with known enzymes of this class showed that CD13 and aminopeptidase N are identical. The latter enzyme was thought to be involved in the metabolism of regulatory peptides by diverse cell types, including small intestinal and renal tubular epithelial cells, macrophages, granulocytes, and synaptic membranes from the CNS. Human aminopeptidase N is a receptor for one strain of human coronavirus that is an important cause of upper respiratory tract infections. Defects in this gene appear to be a cause of various types of leukemia or lymphoma. [provided by RefSeq, Jul 2008]

**Immunogen**

A synthetic peptide of human CD13

**Gene ID**

290

**Swiss Prot**

P15144

**Synonyms**

APN; CD13; LAP1; P150; PEPN; GP150

**Reactivity**

Human,Rat

**Application**

WB, IHC-P, ICC/IF, IP

**Recommended dilution**

WB: 1:1000-1:5000

IHC-P: 1:200-1:500

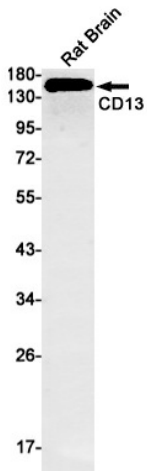
ICC/IF: 1:200-1:500

IP: 1:10-1:100

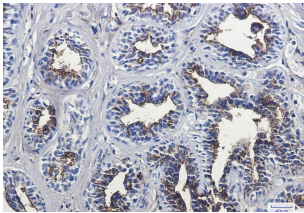
**Calculated MW**

110 kDa

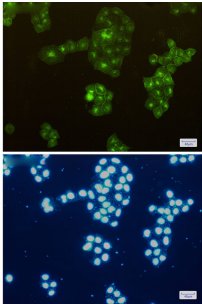
Observed MW	160 kDa
Host species	Rabbit
Clonality	Monoclonal
Clonality No.	DGR11805
Isotype	IgG
Purity	Affinity Purification
Conjugation	Un-conjugated
Storage Stability	Store at -20°C. Supplied in 50mM Tris-Glycine(pH 7.4), 0.15M NaCl, 40% Glycerol, 0.01% sodium azide and 0.05% BSA. Stable for 12 months from date of receipt.



Western blot detection of CD13 in Rat Brain cell using CD13 antibody(1:1000 diluted).



Immunohistochemical analysis of paraffin-embedded human breast cancer using db11477 antibody.



Immunofluorescent analysis of HeLa cells using db11477 antibody (green), and DAPI (blue).