

Recombinant

DGRmAb®

## PTF1A (DGR11823) Rabbit mAb

db14303

Package : 10µL 20µL 50µL 100µL

**Product Name** : PTF1A (DGR11823) Rabbit mAb**Cat.No.:** db14303**Synonyms** : PTF1p48; bHLHa29; PTF1-p48**Application** : WB, IP**Reactivity** : Human,Mouse,Rat**Host species** : Rabbit**Background**

Transcription factor implicated in the cell fate determination in various organs. Binds to the E-box consensus sequence 5'-CANNTG-3'. Plays a role in early and late pancreas development and differentiation. Important for determining whether cells allocated to the pancreatic buds continue towards pancreatic organogenesis or revert back to duodenal fates. May be involved in the maintenance of exocrine pancreas-specific gene expression including ELA1 and amylase. Required for the formation of pancreatic acinar and ductal cells. Plays an important role in cerebellar development. Directly regulated by FOXN4 and RORC during retinal development, FOXN4-PTF1A pathway plays a central role in directing the differentiation of retinal progenitors towards horizontal and amacrine fates.

**Immunogen**

Recombinant protein of mouse PTF1A

**Gene ID**

19213

**Swiss Prot**

Q9QX98

**Synonyms**

PTF1p48; bHLHa29; PTF1-p48

**Reactivity**

Human,Mouse,Rat

**Application**

WB, IP

**Recommended dilution**

WB: 1:1000

IP: 1:50

**Calculated MW**

35 kDa

**Observed MW**

48 kDa

**Host species**

Rabbit

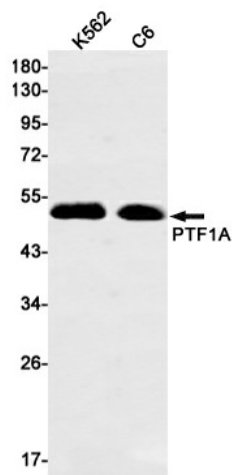
**Clonality**

Monoclonal

**Clonality No.**

DGR11823

Isotype	IgG
Purity	Affinity Purification
Conjugation	Un-conjugated
Storage Stability	Store at -20°C. Supplied in 50mM Tris-Glycine(pH 7.4), 0.15M NaCl, 40% Glycerol, 0.01% sodium azide and 0.05% BSA. Stable for 12 months from date of receipt.



Western blot detection of PTF1A in K562,C6 cell lysates using PTF1A antibody(1:1000 diluted).