

Recombinant

DGRmAb®

ASH2L (DGR11854) Rabbit mAb

db13745

Package : 10μL 20μL 50μL 100μL

Product Name : ASH2L (DGR11854) Rabbit mAb**Cat.No.:** db13745**Synonyms** : ASH2; Bre2; ASH2L1; ASH2L2**Application** : WB, ICC/IF, FC, IP**Reactivity** : Human,Rat**Host species** : Rabbit**Background**

Component of the Set1/Ash2 histone methyltransferase (HMT) complex, a complex that specifically methylates 'Lys-4' of histone H3, but not if the neighboring 'Lys-9' residue is already methylated. As part of the MLL1/MLL complex it is involved in methylation and dimethylation at 'Lys-4' of histone H3. May function as a transcriptional regulator. May play a role in hematopoiesis.

Immunogen

A synthetic peptide of human ASH2L

Gene ID

9070

Swiss Prot

Q9UBL3

Synonyms

ASH2; Bre2; ASH2L1; ASH2L2

Reactivity

Human,Rat

Application

WB, ICC/IF, FC, IP

Recommended dilution

WB: 1:1000-1:5000

ICC/IF: 1:50-1:100

FC: 1:20-1:50

IP: 1:50

Calculated MW

69 kDa

Observed MW

80 kDa

Host species

Rabbit

Clonality

Monoclonal

Clonality No.

DGR11854

Isotype

IgG

Purity

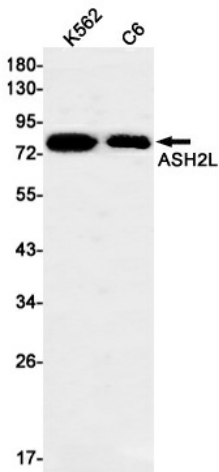
Affinity Purification

Conjugation

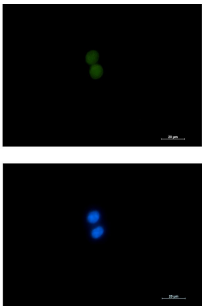
Un-conjugated

Storage Stability

Store at -20°C. Supplied in 50mM Tris-Glycine(pH 7.4), 0.15M NaCl, 40% Glycerol, 0.01% sodium azide and 0.05% BSA. Stable for 12 months from date of receipt.



Western blot detection of ASH2L in K562,C6 cell lysates using ASH2L antibody(1:1000 diluted).



Immunofluorescent analysis of K562 cells using db13745 antibody (green), and DAPI (blue).