

Recombinant

DGRmAb®

BANF1 (DGR11881) Rabbit mAb

db13480

Package : 10μL 20μL 50μL 100μL

Product Name : BANF1 (DGR11881) Rabbit mAb**Cat.No.:** db13480**Synonyms** : BAF; NGPS; BCRP1; D14S1460**Application** : WB, IHC-P, ICC/IF, FC**Reactivity** : Human,Mouse**Host species** : Rabbit**Background**

The protein encoded by this gene was first identified by its ability to protect retroviruses from intramolecular integration and therefore promote intermolecular integration into the host cell genome. The protein forms a homodimer which localizes to both the nucleus and cytoplasm and is specifically associated with chromosomes during mitosis. This protein binds to double stranded DNA in a non-specific manner and also binds to LEM-domain containing proteins of the nuclear envelope. This protein is thought to facilitate nuclear reassembly by binding with both DNA and inner nuclear membrane proteins and thereby recruit chromatin to the nuclear periphery. Alternative splicing results in multiple transcript variants encoding the same protein.[provided by RefSeq, Jan 2009]

Immunogen

A synthetic peptide of human BANF1

Gene ID

8815

Swiss Prot

O75531

Synonyms

BAF; NGPS; BCRP1; D14S1460

Reactivity

Human,Mouse

Application

WB, IHC-P, ICC/IF, FC

Recommended dilution

WB: 1:1000-1:5000

IHC-P: 1:100-1:200

ICC/IF: 1:100

FC: 1:50-1:100

Calculated MW

10 kDa

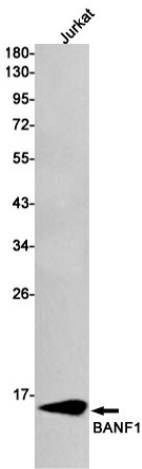
Observed MW

10 kDa

Host species

Rabbit

Clonality	Monoclonal
Clonality No.	DGR11881
Isotype	IgG
Purity	Affinity Purification
Conjugation	Un-conjugated
Storage Stability	Store at -20°C. Supplied in 50mM Tris-Glycine(pH 7.4), 0.15M NaCl, 40% Glycerol, 0.01% sodium azide and 0.05% BSA. Stable for 12 months from date of receipt.



Western blot detection of BANF1 in Jurkat cell lysates using BANF1 antibody(1:1000 diluted).