

Recombinant

DGRmAb®

ATM (DGR11940) Rabbit mAb

db13190

Package : 10µL 20µL 50µL 100µL

Product Name : ATM (DGR11940) Rabbit mAb**Cat.No.:** db13190**Synonyms** : AT1; ATA; ATC; ATD; ATE; ATDC; TEL1; TELO1**Application** : WB, IHC-P, ICC/IF, FC**Reactivity** : Human**Host species** : Rabbit**Background**

The protein encoded by this gene belongs to the PI3/PI4-kinase family. This protein is an important cell cycle checkpoint kinase that phosphorylates; thus, it functions as a regulator of a wide variety of downstream proteins, including tumor suppressor proteins p53 and BRCA1, checkpoint kinase CHK2, checkpoint proteins RAD17 and RAD9, and DNA repair protein NBS1. This protein and the closely related kinase ATR are thought to be master controllers of cell cycle checkpoint signaling pathways that are required for cell response to DNA damage and for genome stability. Mutations in this gene are associated with ataxia telangiectasia, an autosomal recessive disorder. [provided by RefSeq, Aug 2010]

Immunogen

A synthetic peptide of human ATM

Gene ID

472

Swiss Prot

Q13315

Synonyms

AT1; ATA; ATC; ATD; ATE; ATDC; TEL1; TELO1

Reactivity

Human

Application

WB, IHC-P, ICC/IF, FC

Recommended dilution

WB: 1:1000-1:5000

IHC-P: 1:100

ICC/IF: 1:200-1:500

FC: 1:20

Calculated MW

351 kDa

Observed MW

351 kDa

Host species

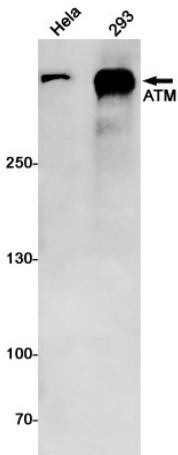
Rabbit

Clonality

Monoclonal

Clonality No.	DGR11940
Isotype	IgG
Purity	Affinity Purification
Conjugation	Un-conjugated
Storage Stability	Store at -20°C. Supplied in 50mM Tris-Glycine(pH 7.4), 0.15M NaCl, 40% Glycerol, 0.01% sodium azide and 0.05% BSA. Stable for 12 months from date of receipt.

Western blot detection of ATM in HeLa,293 cell lysates using ATM antibody(1:1000 diluted).



Immunofluorescent analysis of HT-1080 cells using db13190 antibody (green), and DAPI (blue).

