

Recombinant

DGRmAb®

Myosin Light Chain 2 (DGR12003) Rabbit mAb

db14820

Package : 10µL 20µL 50µL 100µL

Product Name : Myosin Light Chain 2 (DGR12003) Rabbit mAb**Cat.No.:** db14820**Synonyms** : MLC2; CMH10; MLC-2s/v**Application** : WB, IHC-P**Reactivity** : Human,Mouse,Rat**Host species** : Rabbit**Background**

Thus gene encodes the regulatory light chain associated with cardiac myosin beta (or slow) heavy chain. Ca⁺ triggers the phosphorylation of regulatory light chain that in turn triggers contraction. Mutations in this gene are associated with mid-left ventricular chamber type hypertrophic cardiomyopathy. [provided by RefSeq, Jul 2008]

Immunogen

A synthetic peptide of human Myosin Light Chain 2

Gene ID

4633

Swiss Prot

P10916

Synonyms

MLC2; CMH10; MLC-2s/v

Reactivity

Human,Mouse,Rat

Application

WB, IHC-P

Recommended dilution

WB: 1:1000-1:5000

IHC-P: 1:200-1:500

Calculated MW

19 kDa

Observed MW

19 kDa

Host species

Rabbit

Clonality

Monoclonal

Clonality No.

DGR12003

Isotype

IgG

Purity

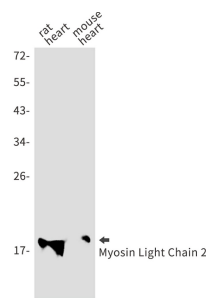
Affinity Purification

Conjugation

Un-conjugated

Storage Stability

Store at -20°C. Supplied in 50mM Tris-Glycine(pH 7.4), 0.15M NaCl, 40% Glycerol, 0.01% sodium azide and 0.05% BSA. Stable for 12 months from date of receipt.



Western blot detection of Myosin Light Chain 2 in rat heart,mouse heart using Myosin Light Chain 2 antibody.