

Recombinant

DGRmAb®

HMGB1 (DGR12117) Rabbit mAb

db11568

Package : 10µL 20µL 50µL 100µL

Product Name : HMGB1 (DGR12117) Rabbit mAb**Cat.No.:** db11568**Synonyms** : HMG1; HMG3; HMG-1; SBP-1**Application** : WB, IHC-P, ICC/IF, FC**Reactivity** : Human,Mouse,Rat**Host species** : Rabbit**Background**

This gene encodes a protein that belongs to the High Mobility Group-box superfamily. The encoded non-histone, nuclear DNA-binding protein regulates transcription, and is involved in organization of DNA. This protein plays a role in several cellular processes, including inflammation, cell differentiation and tumor cell migration. Multiple pseudogenes of this gene have been identified. Alternative splicing results in multiple transcript variants that encode the same protein. [provided by RefSeq, Sep 2015]

Immunogen

A synthetic peptide of human HMGB1

Gene ID

3146

Swiss Prot

P09429

Synonyms

HMG1; HMG3; HMG-1; SBP-1

Reactivity

Human,Mouse,Rat

Application

WB, IHC-P, ICC/IF, FC

Recommended dilution

WB: 1:2000-1:20000

IHC-P: 1:200-1:500

ICC/IF: 1:100-1:200

FC: 1:20

Calculated MW

25 kDa

Observed MW

25 kDa

Host species

Rabbit

Clonality

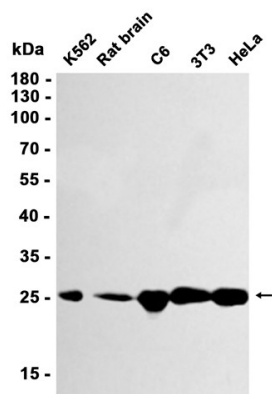
Monoclonal

Clonality No.

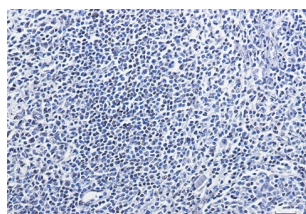
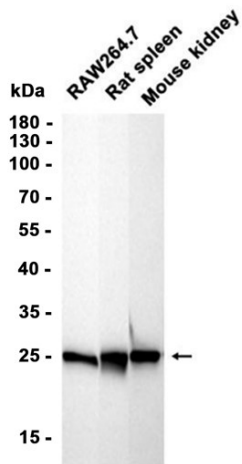
DGR12117

Isotype	IgG
Purity	Affinity Purification
Conjugation	Un-conjugated
Storage Stability	Store at -20°C. Supplied in 50mM Tris-Glycine(pH 7.4), 0.15M NaCl, 40% Glycerol, 0.01% sodium azide and 0.05% BSA. Stable for 12 months from date of receipt.

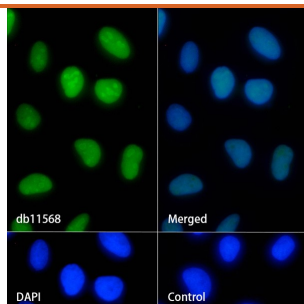
Western blot analysis of extracts from K562, C6, 3T3, HeLa cells and Rat brain tissue using db11568 at 1:1000.



Western blot analysis of extracts from RAW264.7 cells and Rat spleen, Mouse kidney tissues using db11568 at 1:1000.



Immunohistochemical analysis of paraffin-embedded human tonsil using db11568 antibody.



Immunofluorescence analysis of HeLa cells labelling HMGB1 with db11568.

The cells were fixed with 4% PFA (10min, RT) followed by treatment with 0.1% Triton X-100 (10min, RT), and blocked in 1% BSA/10% normal goat serum/0.3M glycine in 0.1% PBS-Tween 20 for 1h. The cells were then incubate with db11568 (1:100) at room temperature for 1h, followed by a further incubation at room temperature for 45min with Goat Anti Rabbit IgG (H+L)-AF488 (db10005, shown in green). Nuclear DNA was labeled in blue with DAPI.

Control: Secondary antibody only.