

Recombinant

DGRmAb®

## Smad3 (DGR12118) Rabbit mAb

db11519

Package : 10µL 20µL 50µL 100µL

**Product Name :** Smad3 (DGR12118) Rabbit mAb**Cat.No.:** db11519**Synonyms :** LDS3; LDS1C; MADH3; JV15-2; HSPC193; HsT17436**Application :** WB, IHC-P, ICC/IF, FC**Reactivity :** Human,Mouse,Rat**Host species :** Rabbit**Background**

The protein encoded by this gene belongs to the SMAD, a family of proteins similar to the gene products of the Drosophila gene 'mothers against decapentaplegic' (Mad) and the C. elegans gene Sma. SMAD proteins are signal transducers and transcriptional modulators that mediate multiple signaling pathways. This protein functions as a transcriptional modulator activated by transforming growth factor-beta and is thought to play a role in the regulation of carcinogenesis. [provided by RefSeq, Apr 2009]

**Immunogen**

A synthetic peptide of human Smad3

**Gene ID**

4088

**Swiss Prot**

P84022

**Synonyms**

LDS3; LDS1C; MADH3; JV15-2; HSPC193; HsT17436

**Reactivity**

Human,Mouse,Rat

**Application**

WB, IHC-P, ICC/IF, FC

**Recommended dilution**

WB: 1:1000-1:5000

IHC-P: 1:200-1:1000

ICC/IF: 1:500-1:2000

FC: 1:50-1:200

**Calculated MW**

48 kDa

**Observed MW**

52 kDa

**Host species**

Rabbit

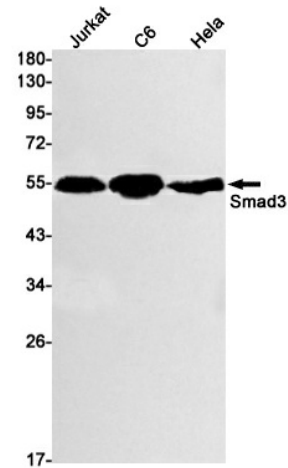
**Clonality**

Monoclonal

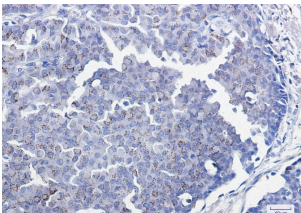
**Clonality No.**

DGR12118

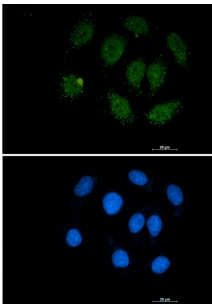
Isotype	IgG
Purity	Affinity Purification
Conjugation	Un-conjugated
Storage Stability	Store at -20°C. Supplied in 50mM Tris-Glycine(pH 7.4), 0.15M NaCl, 40% Glycerol, 0.01% sodium azide and 0.05% BSA. Stable for 12 months from date of receipt.



Western blot detection of Smad3 in Jurkat,C6,HeLa cell lysates using Smad3 antibody(1:1000 diluted).



Immunohistochemical analysis of paraffin-embedded human breast cancer tissue using db11519 antibody.



Immunofluorescent analysis of A549 cells using db11519 antibody (green), and DAPI (blue).