

Recombinant

DGRmAb®

## EGFR (DGR12136) Rabbit mAb

db13403

Package : 10µL 20µL 50µL 100µL

**Product Name** : EGFR (DGR12136) Rabbit mAb

**Cat.No.:** db13403

**Synonyms** : ERBB; HER1; mENA; ERBB1; PIG61; NISBD2

**Application** : WB, IHC-P, ICC/IF, FC, IP

**Reactivity** : Human,Mouse,Rat

**Host species** : Rabbit

### Background

The protein encoded by this gene is a transmembrane glycoprotein that is a member of the protein kinase superfamily. This protein is a receptor for members of the epidermal growth factor family. EGFR is a cell surface protein that binds to epidermal growth factor. Binding of the protein to a ligand induces receptor dimerization and tyrosine autophosphorylation and leads to cell proliferation. Mutations in this gene are associated with lung cancer. [provided by RefSeq, Jun 2016]

### Immunogen

A synthetic peptide of human EGFR

### Gene ID

1956

### Swiss Prot

P00533

### Synonyms

ERBB; HER1; mENA; ERBB1; PIG61; NISBD2

### Reactivity

Human,Mouse,Rat

### Application

WB, IHC-P, ICC/IF, FC, IP

### Recommended dilution

WB: 1:1000-1:5000

IHC-P: 1:100

ICC/IF: 1:200-1:500

FC: 1:20

IP: 1:20

### Calculated MW

134 kDa

### Observed MW

175 kDa

### Host species

Rabbit

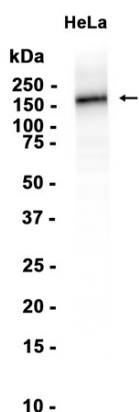
### Clonality

Monoclonal

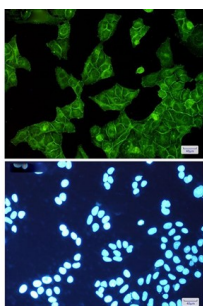
### Clonality No.

DGR12136

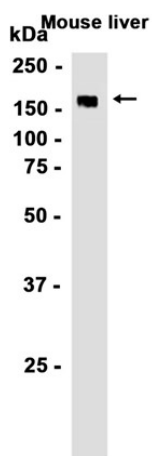
<b>Isotype</b>	IgG
<b>Purity</b>	Affinity Purification
<b>Conjugation</b>	Un-conjugated
<b>Storage Stability</b>	Store at -20°C. Supplied in 50mM Tris-Glycine(pH 7.4), 0.15M NaCl, 40% Glycerol, 0.01% sodium azide and 0.05% BSA. Stable for 12 months from date of receipt.



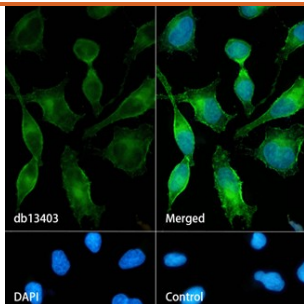
Western blot analysis of extracts from HeLa cells using db13403 at 1:1000.



Immunofluorescent analysis of HeLa cells using db13403 antibody (green), and DAPI (blue).



Western blot analysis of extracts from Mouse liver tissue using db13403 at 1:1000.



Immunofluorescence analysis of HeLa cells labelling EGFR with db13403.

The cells were fixed with cold 100% methanol (10min, 4°C) and blocked in 1% BSA/10% normal goat serum/0.3M glycine in 0.1% PBS-Tween 20 for 1h. The cells were then incubate with db13403 (1:200) at room temperature for 1h, followed by a further incubation at room temperature for 45min with Goat Anti Rabbit IgG (H+L)-AF488 (db10005, shown in green). Nuclear DNA was labeled in blue with DAPI.

Control: Secondary antibody only.