

Recombinant

DGRmAb®

## MLKL (DGR12141) Rabbit mAb

db12457

Package : 10µL 20µL 50µL 100µL

**Product Name** : MLKL (DGR12141) Rabbit mAb**Cat.No.:** db12457**Synonyms** : hMLKL**Application** : WB, IHC-P, ICC/IF**Reactivity** : Human**Host species** : Rabbit**Background**

This gene belongs to the protein kinase superfamily. The encoded protein contains a protein kinase-like domain; however, is thought to be inactive because it lacks several residues required for activity. This protein plays a critical role in tumor necrosis factor (TNF)-induced necroptosis, a programmed cell death process, via interaction with receptor-interacting protein 3 (RIP3), which is a key signaling molecule in necroptosis pathway. Inhibitor studies and knockdown of this gene inhibited TNF-induced necrosis. High levels of this protein and RIP3 are associated with inflammatory bowel disease in children. Alternatively spliced transcript variants have been described for this gene. [provided by RefSeq, Sep 2015]

**Immunogen**

Recombinant protein of human MLKL

**Gene ID**

197259

**Swiss Prot**

Q8NB16

**Synonyms**

hMLKL

**Reactivity**

Human

**Application**

WB, IHC-P, ICC/IF

**Recommended dilution**

WB: 1:1000

IHC-P: 1:100-1:200

ICC/IF: 1:100-1:200

**Calculated MW**

55 kDa

**Observed MW**

55 kDa

**Host species**

Rabbit

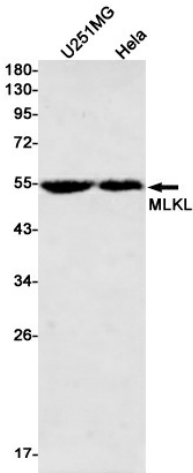
**Clonality**

Monoclonal

**Clonality No.**

DGR12141

Isotype	IgG
Purity	Affinity Purification
Conjugation	Un-conjugated
Storage Stability	Store at -20°C. Supplied in 50mM Tris-Glycine(pH 7.4), 0.15M NaCl, 40% Glycerol, 0.01% sodium azide and 0.05% BSA. Stable for 12 months from date of receipt.



Western blot detection of MLKL in U251MG,HeLa cell lysates using MLKL antibody(1:500 diluted).