

Recombinant

DGRmAb®

Chk1 (DGR12192) Rabbit mAb

db14895

Package : 10µL 20µL 50µL 100µL

Product Name : Chk1 (DGR12192) Rabbit mAb**Cat.No.:** db14895**Synonyms** : CHK1**Application** : WB, ICC/IF, FC, IP**Reactivity** : Human,Mouse,Rat**Host species** : Rabbit**Background**

The protein encoded by this gene belongs to the Ser/Thr protein kinase family. It is required for checkpoint mediated cell cycle arrest in response to DNA damage or the presence of unreplicated DNA. This protein acts to integrate signals from ATM and ATR, two cell cycle proteins involved in DNA damage responses, that also associate with chromatin in meiotic prophase I. Phosphorylation of CDC25A protein phosphatase by this protein is required for cells to delay cell cycle progression in response to double-strand DNA breaks. Several alternatively spliced transcript variants have been found for this gene. [provided by RefSeq, Oct 2011]

Immunogen

A synthetic peptide of human Chk1

Gene ID

1111

Swiss Prot

O14757

Synonyms

CHK1

Reactivity

Human,Mouse,Rat

Application

WB, ICC/IF, FC, IP

Recommended dilution

WB: 1:1000

ICC/IF: 1:50

FC: 1:20

IP: 1:20

Calculated MW

54 kDa

Observed MW

54 kDa

Host species

Rabbit

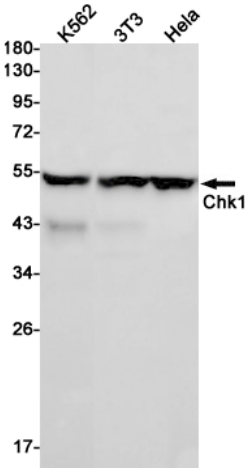
Clonality

Monoclonal

Clonality No.

DGR12192

Isotype	IgG
Purity	Affinity Purification
Conjugation	Un-conjugated
Storage Stability	Store at -20°C. Supplied in 50mM Tris-Glycine(pH 7.4), 0.15M NaCl, 40% Glycerol, 0.01% sodium azide and 0.05% BSA. Stable for 12 months from date of receipt.



Western blot detection of Chk1 in K562,3T3,HeLa cell lysates using Chk1 antibody(1:1000 diluted).