

Recombinant

DGRmAb®

Destrin (DGR12219) Rabbit mAb

db14424

Package : 10µL 20µL 50µL 100µL

Product Name : Destrin (DGR12219) Rabbit mAb

Cat.No.: db14424

Synonyms : ADF; ACTDP; HEL32; bA462D18.2

Application : WB, IHC-P, ICC/IF, FC, IP

Reactivity : Human,Mouse,Rat

Host species : Rabbit

Background

The product of this gene belongs to the actin-binding proteins ADF family. This family of proteins is responsible for enhancing the turnover rate of actin in vivo. This gene encodes the actin depolymerizing protein that severs actin filaments (F-actin) and binds to actin monomers (G-actin). Two transcript variants encoding distinct isoforms have been identified for this gene. [provided by RefSeq, Jul 2008]

Immunogen

A synthetic peptide of human Destrin

Gene ID

11034

Swiss Prot

P60981

Synonyms

ADF; ACTDP; HEL32; bA462D18.2

Reactivity

Human,Mouse,Rat

Application

WB, IHC-P, ICC/IF, FC, IP

Recommended dilution

WB: 1:1000-1:5000
 IHC-P: 1:50-1:100
 ICC/IF: 1:200-1:1000
 FC: 1:200-1:500
 IP: 1:20-1:50

Calculated MW

19 kDa

Observed MW

19 kDa

Host species

Rabbit

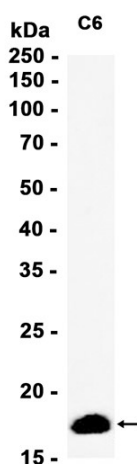
Clonality

Monoclonal

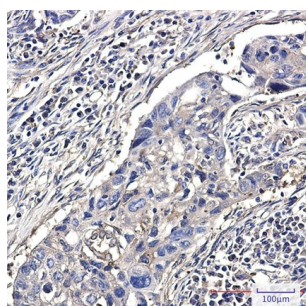
Clonality No.

DGR12219

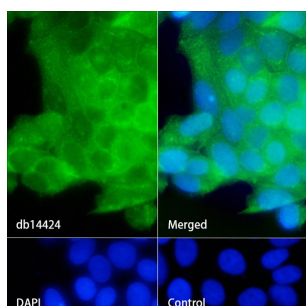
Isotype	IgG
Purity	Affinity Purification
Conjugation	Un-conjugated
Storage Stability	Store at -20°C. Supplied in 50mM Tris-Glycine(pH 7.4), 0.15M NaCl, 40% Glycerol, 0.01% sodium azide and 0.05% BSA. Stable for 12 months from date of receipt.



Western blot analysis of extracts from C6 cells using db14424 at 1:1000.



Immunohistochemical analysis of paraffin-embedded human lung cancer using db14424 antibody.



Immunofluorescence analysis of MCF-7 cells labelling Destrin with db14424.

The cells were fixed with 4% PFA (10min, RT) followed by treatment with 0.1% Triton X-100 (10min, RT), and blocked in 1% BSA/10% normal goat serum/0.3M glycine in 0.1% PBS-Tween 20 for 1h. The cells were then incubate with db14424 (1:200) at room temperature for 1h, followed by a further incubation at room temperature for 45min with Goat Anti Rabbit IgG (H+L)-AF488 (db10005, shown in green). Nuclear DNA was labeled in blue with DAPI.

Control: Secondary antibody only.