

Recombinant

DGRmAb®

**Cyclin B1 (DGR12283) Rabbit mAb**

db13323

Package : 10µL 20µL 50µL 100µL

**Product Name** : Cyclin B1 (DGR12283) Rabbit mAb**Cat.No.:** db13323**Synonyms** : CCNB**Application** : WB, IHC-P, ICC/IF, FC, IP**Reactivity** : Human**Host species** : Rabbit**Background**

The protein encoded by this gene is a regulatory protein involved in mitosis. The gene product complexes with p34(cdc2) to form the maturation-promoting factor (MPF). The encoded protein is necessary for proper control of the G2/M transition phase of the cell cycle. [provided by RefSeq, Aug 2017]

**Immunogen**

A synthetic peptide of human Cyclin B1

**Gene ID**

891

**Swiss Prot**

P14635

**Synonyms**

CCNB

**Reactivity**

Human

**Application**

WB, IHC-P, ICC/IF, FC, IP

**Recommended dilution**

WB: 1:2000-1:20000

IHC-P: 1:100-1:200

ICC/IF: 1:100

FC: 1:200-1:500

IP: 1:20

**Calculated MW**

48 kDa

**Observed MW**

55 kDa

**Host species**

Rabbit

**Clonality**

Monoclonal

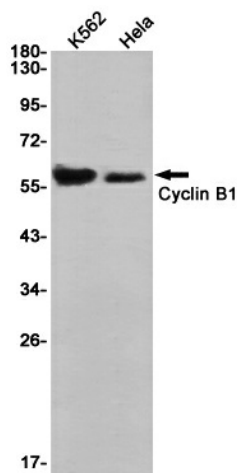
**Clonality No.**

DGR12283

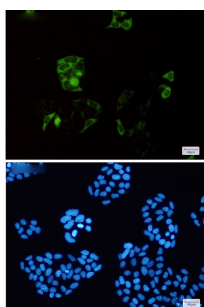
**Isotype**

IgG

Purity	Affinity Purification
Conjugation	Un-conjugated
Storage Stability	Store at -20°C. Supplied in 50mM Tris-Glycine(pH 7.4), 0.15M NaCl, 40% Glycerol, 0.01% sodium azide and 0.05% BSA. Stable for 12 months from date of receipt.



Western blot detection of Cyclin B1 in K562, HeLa cell lysates using Cyclin B1 antibody (1:1000 diluted).



Immunofluorescent analysis of HeLa cells using db13323 antibody (green), and DAPI (blue).