

Recombinant

DGRmAb®

HCE (DGR12308) Rabbit mAb

db13328

Package : 10µL 20µL 50µL 100µL

Product Name : HCE (DGR12308) Rabbit mAb**Cat.No.:** db13328**Synonyms** : HCE; HCE1; hCAP; CAP1A**Application** : WB, IHC, ICC/IF, IP**Reactivity** : Human, Mouse, Rat**Host species** : Rabbit**Background**

Bifunctional mRNA-capping enzyme exhibiting RNA 5'-triphosphatase activity in the N-terminal part and mRNA guanylyltransferase activity in the C-terminal part. Catalyzes the first two steps of cap formation: by removing the gamma-phosphate from the 5'-triphosphate end of nascent mRNA to yield a diphosphate end, and by transferring the gmp moiety of GTP to the 5'-diphosphate terminus.

Immunogen

Recombinant protein of human HCE

Gene ID

8732

Swiss Prot

O60942

Synonyms

HCE; HCE1; hCAP; CAP1A

Reactivity

Human, Mouse, Rat

Application

WB, IHC, ICC/IF, IP

Recommended dilution

WB: 1:1000

IHC: 1:50

ICC/IF: 1:50

IP: 1:20

Calculated MW

69 kDa

Observed MW

69 kDa

Host species

Rabbit

Clonality

Monoclonal

Clonality No.

DGR12308

Isotype

IgG

Purity

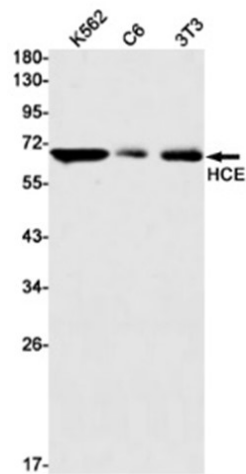
Affinity Purification

Conjugation

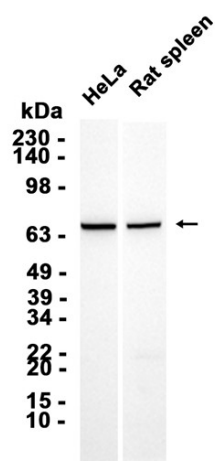
Un-conjugated

Storage Stability

Store at -20°C. Supplied in 50mM Tris-Glycine(pH 7.4), 0.15M NaCl, 40% Glycerol, 0.01% sodium azide and 0.05% BSA. Stable for 12 months from date of receipt.



Western blot detection of HCE in K562,C6,3T3 cell lysates using HCE antibody(1:1000 diluted).



Western blot analysis of extracts from HeLa cells and Rat spleen tissue using db13328 at 1:1000.