

Recombinant

DGRmAb®

S100A4 (DGR12310) Rabbit mAb

db14618

Package : 10µL 20µL 50µL 100µL

Product Name : S100A4 (DGR12310) Rabbit mAb**Cat.No.:** db14618**Synonyms :** 42A; 18A2; CAPL; FSP1; MTS1; P9KA; PEL98**Application :** WB, IHC-P, ICC/IF, FC, IP**Reactivity :** Human**Host species :** Rabbit**Background**

The protein encoded by this gene is a member of the S100 family of proteins containing 2 EF-hand calcium-binding motifs. S100 proteins are localized in the cytoplasm and/or nucleus of a wide range of cells, and involved in the regulation of a number of cellular processes such as cell cycle progression and differentiation. S100 genes include at least 13 members which are located as a cluster on chromosome 1q21. This protein may function in motility, invasion, and tubulin polymerization. Chromosomal rearrangements and altered expression of this gene have been implicated in tumor metastasis. Multiple alternatively spliced variants, encoding the same protein, have been identified. [provided by RefSeq, Jul 2008]

Immunogen

A synthetic peptide of human S100A4

Gene ID

6275

Swiss Prot

P26447

Synonyms

42A; 18A2; CAPL; FSP1; MTS1; P9KA; PEL98

Reactivity

Human

Application

WB, IHC-P, ICC/IF, FC, IP

Recommended dilution

WB: 1:1000-1:5000

IHC-P: 1:200-1:500

ICC/IF: 1:100-1:200

FC: 1:100-1:500

IP: 1:10-1:100

Calculated MW

12 kDa

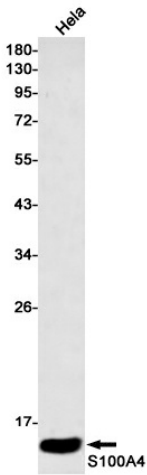
Observed MW

12 kDa

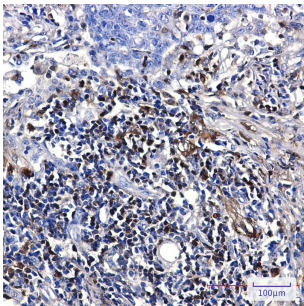
Host species

Rabbit

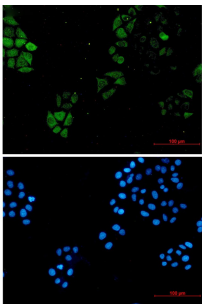
Clonality	Monoclonal
Clonality No.	DGR12310
Isotype	IgG
Purity	Affinity Purification
Conjugation	Un-conjugated
Storage Stability	Store at -20°C. Supplied in 50mM Tris-Glycine(pH 7.4), 0.15M NaCl, 40% Glycerol, 0.01% sodium azide and 0.05% BSA. Stable for 12 months from date of receipt.



Western blot detection of S100A4 in HeLa cell lysates using S100A4 antibody(1:500 diluted).



Immunohistochemical analysis of paraffin-embedded human lung cancer using db14618 antibody.



Immunofluorescent analysis of HeLa cells using db14618 antibody (green), and DAPI (blue).