

Recombinant

DGRmAb®

EPS15R (DGR12391) Rabbit mAb

db13037

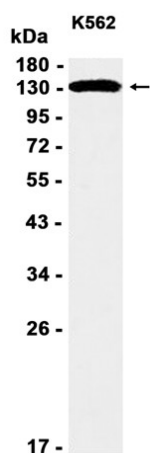
Package : 10µL 20µL 50µL 100µL

Product Name : EPS15R (DGR12391) Rabbit mAb**Cat.No.:** db13037**Synonyms** : EPS15R**Application** : WB, IHC-P**Reactivity** : Human**Host species** : Rabbit

Background	Seems to be a constitutive component of clathrin-coated pits that is required for receptor-mediated endocytosis. Involved in endocytosis of integrin beta-1 (ITGB1) and transferrin receptor (TFR); internalization of ITGB1 as DAB2-dependent cargo but not TFR seems to require association with DAB2.
Immunogen	A synthetic peptide of human EPS15R
Gene ID	58513
Swiss Prot	Q9UBC2
Synonyms	EPS15R
Reactivity	Human
Application	WB, IHC-P
Recommended dilution	WB: 1:1000-1:10000 IHC-P: 1:50
Calculated MW	94 kDa
Observed MW	130 kDa
Host species	Rabbit
Clonality	Monoclonal
Clonality No.	DGR12391
Isotype	IgG
Purity	Affinity Purification
Conjugation	Un-conjugated

Storage Stability

Store at -20°C. Supplied in 50mM Tris-Glycine(pH 7.4), 0.15M NaCl, 40% Glycerol, 0.01% sodium azide and 0.05% BSA. Stable for 12 months from date of receipt.



Western blot analysis of extracts from K562 cells using db13037 at 1:1000.