

Recombinant

DGRmAb®

TGF beta 1 (DGR12426) Rabbit mAb

db13117

Package : 10µL 20µL 50µL 100µL

Product Name : TGF beta 1 (DGR12426) Rabbit mAb**Cat.No.:** db13117**Synonyms :** Tgfb; Tgfb-1; TGFbeta1; TGF-beta1**Application :** WB**Reactivity :** Human,Mouse,Rat**Host species :** Rabbit**Background**

This gene encodes a secreted ligand of the TGF-beta (transforming growth factor-beta) superfamily of proteins. Ligands of this family bind various TGF-beta receptors leading to recruitment and activation of SMAD family transcription factors that regulate gene expression. The encoded preproprotein is proteolytically processed to generate a latency-associated peptide (LAP) and a mature peptide, and is found in either a latent form composed of a mature peptide homodimer, a LAP homodimer, and a latent TGF-beta binding protein, or in an active form consisting solely of the mature peptide homodimer. The mature peptide may also form heterodimers with other TGF-beta family members. This encoded protein regulates cell proliferation, differentiation and growth, and can modulate expression and activation of other growth factors including interferon gamma and tumor necrosis factor alpha. Mice lacking a functional copy of this gene develop severe multifocal inflammatory disease, yolk sac defects and colon cancer. [provided by RefSeq, Aug 2016]

Immunogen

Recombinant protein of mouse TGF beta 1

Gene ID

21803

Swiss Prot

P04202

Synonyms

Tgfb; Tgfb-1; TGFbeta1; TGF-beta1

Reactivity

Human,Mouse,Rat

Application

WB

Recommended dilution

WB: 1:1000

Calculated MW

44 kDa

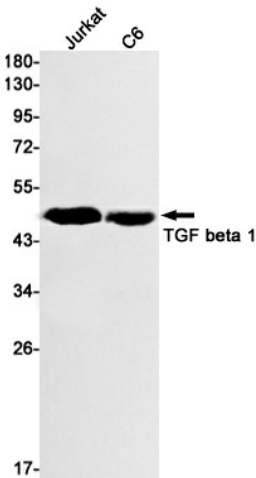
Observed MW

44 kDa

Host species

Rabbit

Clonality	Monoclonal
Clonality No.	DGR12426
Isotype	IgG
Purity	Affinity Purification
Conjugation	Un-conjugated
Storage Stability	Store at -20°C. Supplied in 50mM Tris-Glycine(pH 7.4), 0.15M NaCl, 40% Glycerol, 0.01% sodium azide and 0.05% BSA. Stable for 12 months from date of receipt.



Western blot detection of TGF beta 1 in Jurkat,C6 cell lysates using TGF beta 1 antibody(1:1000 diluted).