

Recombinant

DGRmAb®

Paxillin (DGR12749) Rabbit mAb

db14728

Package : 10µL 20µL 50µL 100µL

Product Name : Paxillin (DGR12749) Rabbit mAb

Cat.No.: db14728

Synonyms : PXN

Application : WB, IHC-P, ICC/IF, FC, IP

Reactivity : Human,Mouse,Rat

Host species : Rabbit

Background

This gene encodes a cytoskeletal protein involved in actin-membrane attachment at sites of cell adhesion to the extracellular matrix (focal adhesion). Alternatively spliced transcript variants encoding different isoforms have been described for this gene. These isoforms exhibit different expression pattern, and have different biochemical, as well as physiological properties (PMID:9054445). [provided by RefSeq, Aug 2011]

Immunogen

A synthetic peptide of human Paxillin

Gene ID

5829

Swiss Prot

P49023

Synonyms

PXN

Reactivity

Human,Mouse,Rat

Application

WB, IHC-P, ICC/IF, FC, IP

Recommended dilution

WB: 1:1000-1:5000

IHC-P: 1:50

ICC/IF: 1:100

FC: 1:20

IP: 1:20

Calculated MW

65 kDa

Observed MW

65 kDa

Host species

Rabbit

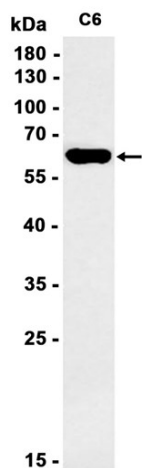
Clonality

Monoclonal

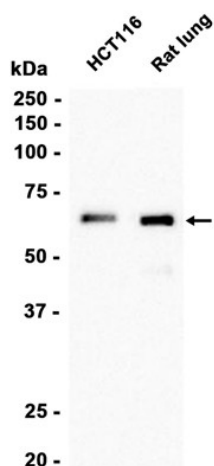
Clonality No.

DGR12749

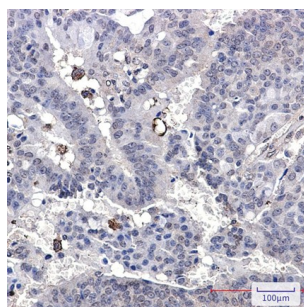
Isotype	IgG
Purity	Affinity Purification
Conjugation	Un-conjugated
Storage Stability	Store at -20°C. Supplied in 50mM Tris-Glycine(pH 7.4), 0.15M NaCl, 40% Glycerol, 0.01% sodium azide and 0.05% BSA. Stable for 12 months from date of receipt.



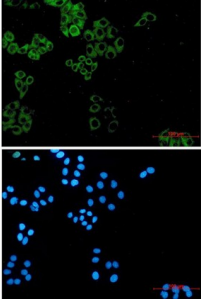
Western blot analysis of extracts from C6 cells using db14728 at 1:1000.



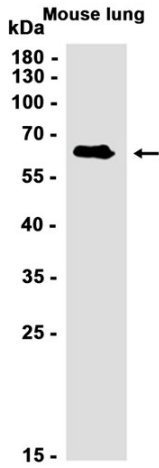
Western blot analysis of extracts from HCT116 cells and Rat lung tissue using db14728 at 1:2000.



Immunohistochemical analysis of paraffin-embedded human breast cancer using db14728 antibody.



Immunofluorescent analysis of HeLa cells using db14728 antibody (green), and DAPI (blue).



Western blot analysis of extracts from Mouse lung tissue using db14728 at 1:1000.