

Recombinant

DGRmAb®

CDK9 (DGR12818) Rabbit mAb

db14251

Package : 10µL 20µL 50µL 100µL

Product Name : CDK9 (DGR12818) Rabbit mAb**Cat.No.:** db14251**Synonyms :** TAK; C-2k; CTK1; CDC2L4; PITALRE**Application :** WB, IHC-P, ICC/IF, FC, IP**Reactivity :** Human,Mouse,Rat**Host species :** Rabbit**Background**

The protein encoded by this gene is a member of the cyclin-dependent protein kinase (CDK) family. CDK family members are highly similar to the gene products of *S. cerevisiae* cdc28, and *S. pombe* cdc2, and known as important cell cycle regulators. This kinase was found to be a component of the multiprotein complex TAK/P-TEFb, which is an elongation factor for RNA polymerase II-directed transcription and functions by phosphorylating the C-terminal domain of the largest subunit of RNA polymerase II. This protein forms a complex with and is regulated by its regulatory subunit cyclin T or cyclin K. HIV-1 Tat protein was found to interact with this protein and cyclin T, which suggested a possible involvement of this protein in AIDS. [provided by RefSeq, Jul 2008]

Immunogen

A synthetic peptide of human Cdk9

Gene ID

1025

Swiss Prot

P50750

Synonyms

TAK; C-2k; CTK1; CDC2L4; PITALRE

Reactivity

Human,Mouse,Rat

Application

WB, IHC-P, ICC/IF, FC, IP

Recommended dilution

WB: 1:1000-1:5000

IHC-P: 1:100-1:200

ICC/IF: 1:50

FC: 1:50-1:100

IP: 1:20

Calculated MW

43 kDa

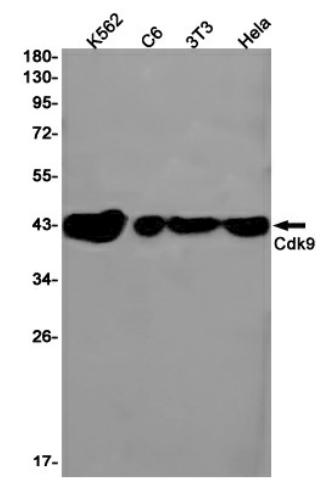
Observed MW

43 kDa

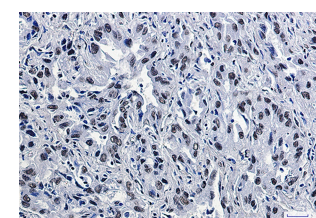
Host species

Rabbit

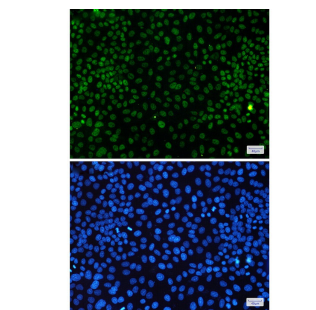
| | |
|-------------------|---|
| Clonality | Monoclonal |
| Clonality No. | DGR12818 |
| Isotype | IgG |
| Purity | Affinity Purification |
| Conjugation | Un-conjugated |
| Storage Stability | Store at -20°C. Supplied in 50mM Tris-Glycine(pH 7.4), 0.15M NaCl, 40% Glycerol, 0.01% sodium azide and 0.05% BSA. Stable for 12 months from date of receipt. |



Western blot detection of Cdk9 in K562,C6,3T3,HeLa cell lysates using Cdk9 antibody(1:1000 diluted).



Immunohistochemical analysis of paraffin-embedded human lung cancer using db14251 antibody.



Immunofluorescent analysis of HeLa cells using db14251 antibody (green), and DAPI (blue).