

Recombinant

DGRmAb®

MCM7 (DGR12840) Rabbit mAb

db14283

Package : 10µL 20µL 50µL 100µL

Product Name : MCM7 (DGR12840) Rabbit mAb**Cat.No.:** db14283**Synonyms :** MCM2; CDC47; P85MCM; P1CDC47; PNAS146; PPP1R104; P1.1-MCM3**Application :** WB, FC**Reactivity :** Human**Host species :** Rabbit**Background**

The protein encoded by this gene is one of the highly conserved mini-chromosome maintenance proteins (MCM) that are essential for the initiation of eukaryotic genome replication. The hexameric protein complex formed by the MCM proteins is a key component of the pre-replication complex (pre_RC) and may be involved in the formation of replication forks and in the recruitment of other DNA replication related proteins. The MCM complex consisting of this protein and MCM2, 4 and 6 proteins possesses DNA helicase activity, and may act as a DNA unwinding enzyme. Cyclin D1-dependent kinase, CDK4, is found to associate with this protein, and may regulate the binding of this protein with the tumorsuppressor protein RB1/RB. Alternatively spliced transcript variants encoding distinct isoforms have been reported. [provided by RefSeq, Jul 2008]

Immunogen

A synthetic peptide of human MCM7

Gene ID

4176

Swiss Prot

P33993

Synonyms

MCM2; CDC47; P85MCM; P1CDC47; PNAS146; PPP1R104; P1.1-MCM3

Reactivity

Human

Application

WB, FC

Recommended dilution

WB: 1:1000

FC: 1:200-1:500

Calculated MW

81 kDa

Observed MW

81 kDa

Host species

Rabbit

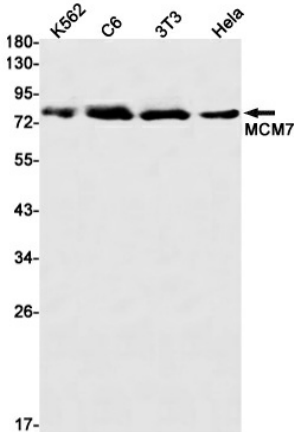
Clonality

Monoclonal

Clonality No.

DGR12840

Isotype	IgG
Purity	Affinity Purification
Conjugation	Un-conjugated
Storage Stability	Store at -20°C. Supplied in 50mM Tris-Glycine(pH 7.4), 0.15M NaCl, 40% Glycerol, 0.01% sodium azide and 0.05% BSA. Stable for 12 months from date of receipt.



Western blot detection of MCM7 in K562,C6,3T3,Hela cell lysates using MCM7 antibody(1:1000 diluted).