

Recombinant

DGRmAb®

beta Catenin (DGR12883) Rabbit mAb

db13925

Package : 10µL 20µL 50µL 100µL

Product Name : beta Catenin (DGR12883) Rabbit mAb**Cat.No.:** db13925**Synonyms** : EVR7; CTNNB; MRD19; armadillo**Application** : WB, IHC-P, ICC/IF, IP**Reactivity** : Human,Mouse,Rat**Host species** : Rabbit**Background**

The protein encoded by this gene is part of a complex of proteins that constitute adherens junctions (AJs). AJs are necessary for the creation and maintenance of epithelial cell layers by regulating cell growth and adhesion between cells. The encoded protein also anchors the actin cytoskeleton and may be responsible for transmitting the contact inhibition signal that causes cells to stop dividing once the epithelial sheet is complete. Finally, this protein binds to the product of the APC gene, which is mutated in adenomatous polyposis of the colon. Mutations in this gene are a cause of colorectal cancer (CRC), pilomatixoma (PTR), medulloblastoma (MDB), and ovarian cancer. Alternative splicing results in multiple transcript variants. [provided by RefSeq, Aug 2016]

Immunogen

A synthetic peptide of human beta Catenin

Gene ID

1499

Swiss Prot

P35222

Synonyms

EVR7; CTNNB; MRD19; armadillo

Reactivity

Human,Mouse,Rat

Application

WB, IHC-P, ICC/IF, IP

Recommended dilution

WB: 1:1000-1:5000

IHC-P: 1:200-1:500

ICC/IF: 1:100-1:200

IP: 1:20-1:50

Calculated MW

86 kDa

Observed MW

86 kDa

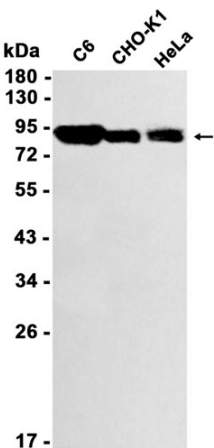
Host species

Rabbit

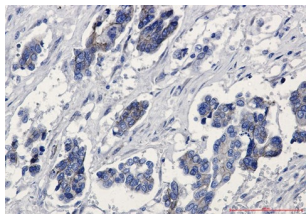
Clonality

Monoclonal

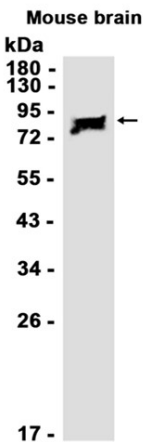
Clonality No.	DGR12883
Isotype	IgG
Purity	Affinity Purification
Conjugation	Un-conjugated
Storage Stability	Store at -20°C. Supplied in 50mM Tris-Glycine(pH 7.4), 0.15M NaCl, 40% Glycerol, 0.01% sodium azide and 0.05% BSA. Stable for 12 months from date of receipt.



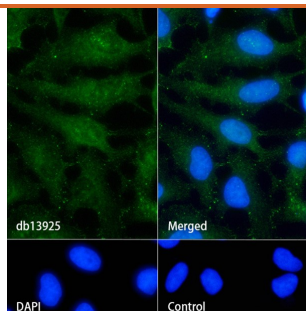
Western blot analysis of extracts from C6,CHO-K1,HeLa cells using db13925 at 1:1000.



Immunohistochemical analysis of paraffin-embedded human Cholangiocarcinoma using db13925 antibody.



Western blot analysis of extracts from Mouse spleen tissue using db13925 at 1:1000.



Immunofluorescence analysis of HeLa cells labelling beta Catenin with db13925.

The cells were fixed with cold 100% methanol (10min, 4°C) and blocked in 1% BSA/10% normal goat serum/0.3M glycine in 0.1% PBS-Tween 20 for 1h. The cells were then incubate with db13925 (1:100) at room temprature for 1h, followed by a further incubation at room temperature for 45min with Goat Anti Rabbit IgG (H+L)-AF488 (db10005, shown in green).

Nuclear DNA was labeled in blue with DAPI.

Control: Secondary antibody only.