

Recombinant

DGRmAb®

Caspase-8 (DGR12902) Rabbit mAb

db11621

Package : 10µL 20µL 50µL 100µL

Product Name : Caspase-8 (DGR12902) Rabbit mAb**Cat.No.:** db11621**Synonyms** : CAP4; MACH; MCH5; FLICE; ALPS2B; Casp-8**Application** : WB**Reactivity** : Human**Host species** : Rabbit**Background**

This gene encodes a member of the cysteine-aspartic acid protease (caspase) family. Sequential activation of caspases plays a central role in the execution-phase of cell apoptosis. Caspases exist as inactive proenzymes composed of a prodomain, a large protease subunit, and a small protease subunit. Activation of caspases requires proteolytic processing at conserved internal aspartic residues to generate a heterodimeric enzyme consisting of the large and small subunits. This protein is involved in the programmed cell death induced by Fas and various apoptotic stimuli. The N-terminal FADD-like death effector domain of this protein suggests that it may interact with Fas-interacting protein FADD. This protein was detected in the insoluble fraction of the affected brain region from Huntington disease patients but not in those from normal controls, which implicated the role in neurodegenerative diseases. Many alternatively spliced transcript variants encoding different isoforms have been described, although not all variants have had their full-length sequences determined. [provided by RefSeq, Jul 2008]

Immunogen

A synthetic peptide of human Caspase-8

Gene ID

841

Swiss Prot

Q14790

Synonyms

CAP4; MACH; MCH5; FLICE; ALPS2B; Casp-8

Reactivity

Human

Application

WB

Recommended dilution

WB: 1:1000

Calculated MW

55 kDa

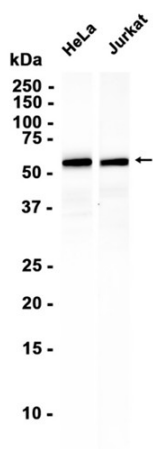
Observed MW

55, 18 kDa

Host species

Rabbit

Clonality	Monoclonal
Clonality No.	DGR12902
Isotype	IgG
Purity	Affinity Purification
Conjugation	Un-conjugated
Storage Stability	Store at -20°C. Supplied in 50mM Tris-Glycine(pH 7.4), 0.15M NaCl, 40% Glycerol, 0.01% sodium azide and 0.05% BSA. Stable for 12 months from date of receipt.



Western blot analysis of extracts from HeLa, Jurkat cells using db11621 at 1:1000.