

Recombinant

DGRmAb®

## PKN1 (DGR12923) Rabbit mAb

db13428

Package : 10µL 20µL 50µL 100µL

**Product Name** : PKN1 (DGR12923) Rabbit mAb**Cat.No.:** db13428**Synonyms** : DBK; PKN; PAK1; PRK1; PAK-1; PRKCL1; PKN-ALPHA**Application** : WB, FC**Reactivity** : Human,Mouse,Rat**Host species** : Rabbit**Background**

The protein encoded by this gene belongs to the protein kinase C superfamily. This kinase is activated by Rho family of small G proteins and may mediate the Rho-dependent signaling pathway. This kinase can be activated by phospholipids and by limited proteolysis. The 3-phosphoinositide dependent protein kinase-1 (PDPK1/PDK1) is reported to phosphorylate this kinase, which may mediate insulin signals to the actin cytoskeleton. The proteolytic activation of this kinase by caspase-3 or related proteases during apoptosis suggests its role in signal transduction related to apoptosis. Alternatively spliced transcript variants encoding distinct isoforms have been observed. [provided by RefSeq, Jul 2008]

**Immunogen**

A synthetic peptide of human PKN1

**Gene ID**

5585

**Swiss Prot**

Q16512

**Synonyms**

DBK; PKN; PAK1; PRK1; PAK-1; PRKCL1; PKN-ALPHA

**Reactivity**

Human,Mouse,Rat

**Application**

WB, FC

**Recommended dilution**

WB: 1:1000-1:5000

FC: 1:10-1:100

**Calculated MW**

104 kDa

**Observed MW**

120 kDa

**Host species**

Rabbit

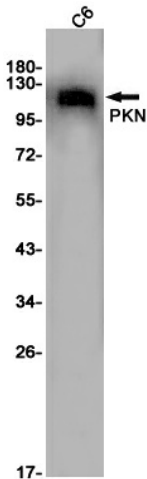
**Clonality**

Monoclonal

**Clonality No.**

DGR12923

Isotype	IgG
Purity	Affinity Purification
Conjugation	Un-conjugated
Storage Stability	Store at -20°C. Supplied in 50mM Tris-Glycine(pH 7.4), 0.15M NaCl, 40% Glycerol, 0.01% sodium azide and 0.05% BSA. Stable for 12 months from date of receipt.



Western blot detection of PKN in C6 cell lysates using PKN antibody(1:1000 diluted).