

Recombinant

DGRmAb®

## Epsin 1 (DGR12935) Rabbit mAb

db13333

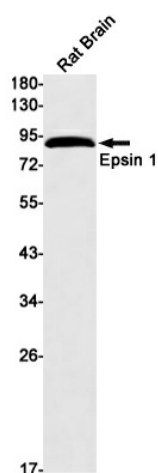
Package : 10µL 20µL 50µL 100µL

**Product Name** : Epsin 1 (DGR12935) Rabbit mAb**Cat.No.:** db13333**Synonyms** : EPN1; EH domain-binding mitotic phosphoprotein; EPS-15-interacting protein 1**Application** : WB, ICC/IF**Reactivity** : Human,Mouse,Rat**Host species** : Rabbit

<b>Background</b>	This gene encodes a member of the epsin protein family. The encoded protein binds clathrin and is involved in the endocytosis of clathrin-coated vesicles. Loss of function of this gene is associated with reduced tumor growth and progression in certain cancer types. [provided by RefSeq, Mar 2016]
<b>Immunogen</b>	A synthetic peptide of human Epsin 1
<b>Gene ID</b>	29924
<b>Swiss Prot</b>	Q9Y6I3
<b>Synonyms</b>	EPN1; EH domain-binding mitotic phosphoprotein; EPS-15-interacting protein 1
<b>Reactivity</b>	Human,Mouse,Rat
<b>Application</b>	WB, ICC/IF
<b>Recommended dilution</b>	WB: 1:1000 ICC/IF: 1:50
<b>Calculated MW</b>	60 kDa
<b>Observed MW</b>	90 kDa
<b>Host species</b>	Rabbit
<b>Clonality</b>	Monoclonal
<b>Clonality No.</b>	DGR12935
<b>Isotype</b>	IgG
<b>Purity</b>	Affinity Purification
<b>Conjugation</b>	Un-conjugated

## Storage Stability

Store at -20°C. Supplied in 50mM Tris-Glycine(pH 7.4), 0.15M NaCl, 40% Glycerol, 0.01% sodium azide and 0.05% BSA. Stable for 12 months from date of receipt.



Western blot detection of Epsin 1 in Rat Brain lysates using Epsin 1 antibody(1:1000 diluted).