

Recombinant

DGRmAb®

## PP2A alpha/beta (DGR13088) Rabbit mAb

db13474

Package : 10µL 20µL 50µL 100µL

**Product Name** : PP2A alpha/beta (DGR13088) Rabbit mAb**Cat.No.:** db13474**Synonyms** : RP-C; PP2Ac; PP2CA; PP2Calpha**Application** : WB, IHC-P, FC**Reactivity** : Human,Mouse,Rat**Host species** : Rabbit**Background**

This gene encodes the phosphatase 2A catalytic subunit. Protein phosphatase 2A is one of the four major Ser/Thr phosphatases, and it is implicated in the negative control of cell growth and division. It consists of a common heteromeric core enzyme, which is composed of a catalytic subunit and a constant regulatory subunit, that associates with a variety of regulatory subunits. This gene encodes an alpha isoform of the catalytic subunit. [provided by RefSeq, Jul 2008]

**Immunogen**

A synthetic peptide of human PP2A alpha

**Gene ID**

5515

**Swiss Prot**

P67775

**Synonyms**

RP-C; PP2Ac; PP2CA; PP2Calpha

**Reactivity**

Human,Mouse,Rat

**Application**

WB, IHC-P, FC

**Recommended dilution**

WB: 1:1000-1:5000

IHC-P: 1:200-1:500

FC: 1:20-1:50

**Calculated MW**

36 kDa

**Observed MW**

36 kDa

**Host species**

Rabbit

**Clonality**

Monoclonal

**Clonality No.**

DGR13088

**Isotype**

IgG

**Purity**

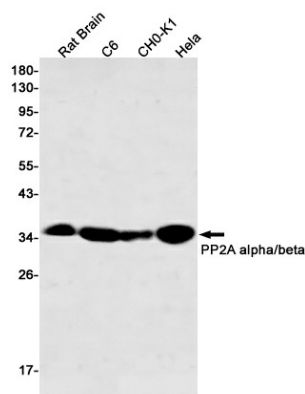
Affinity Purification

**Conjugation**

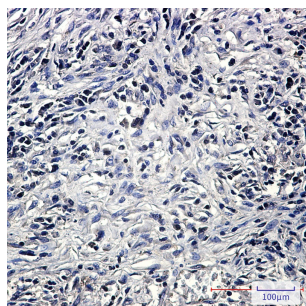
Un-conjugated

**Storage Stability**

Store at -20°C. Supplied in 50mM Tris-Glycine(pH 7.4), 0.15M NaCl, 40% Glycerol, 0.01% sodium azide and 0.05% BSA. Stable for 12 months from date of receipt.



Western blot detection of PP2A alpha/beta in Rat Brain,C6,CHO-K1,HeLa cell lysates using PP2A alpha/beta antibody(1:500 diluted).



Immunohistochemical analysis of paraffin-embedded human lung cancer using db13474 antibody.